

**DiVal Safety is an  
Authorized Distributor of:**





Order by Phone:  
**800.343.1354**  
7am - 5pm EST Monday - Friday.



Order by Fax:  
**716.874.4686**  
24 Hours a Day. Every Day.



Order by Web:  
**www.DiValSafety.com**  
24 Hours a Day. Every Day.



Order by E-Mail:  
**orders@divalsafety.com**  
24 Hours a Day. Every Day.



Order by Mail:  
**DiVal Safety Equipment, Inc.**  
1721 Niagara Street, Buffalo, New York 14207

## Safety Outlet Store Locations

### Buffalo

1701 Niagara St.  
Mon-Fri 7am-5pm ET  
Sat 8am-12pm ET

### Philadelphia

(West Chester, PA)  
220 Garfield Ave.  
Mon-Fri 7am-5pm ET

### Rochester

845 West Ave.  
Mon-Fri 7am-5pm ET

### Syracuse

6179 E. Molloy Rd.  
Mon-Fri 7am-5pm ET

## Table of Contents

## Pages

<b>Footwear .....</b>	<b>3-6</b>
<b>Footwear Covers &amp; Accessories .....</b>	<b>6</b>
<b>Traction Devices .....</b>	<b>7</b>
<b>Base Layer Protection .....</b>	<b>8,28-29</b>
<b>Helmet Liners .....</b>	<b>9,30</b>
<b>Face Masks .....</b>	<b>9-11,28-29-31</b>
<b>Caps .....</b>	<b>10-11,30-31</b>
<b>Carhartt Apparel .....</b>	<b>12-14</b>
<b>Cold Weather Workwear .....</b>	<b>14-19,26-27</b>
<b>Hi-Viz Workwear .....</b>	<b>14-19,26</b>
<b>Rainwear .....</b>	<b>16,18,27,31</b>
<b>Cold Weather Gloves .....</b>	<b>20-25,36</b>
<b>Leather Gloves .....</b>	<b>22-23</b>
<b>PVC Coated Gloves .....</b>	<b>24</b>
<b>Glove Liners .....</b>	<b>25</b>
<b>Hand Warmers .....</b>	<b>25</b>
<b>Hand Sanitizer .....</b>	<b>26</b>
<b>FR Cold Weather Apparel .....</b>	<b>27-31</b>
<b>Heaters .....</b>	<b>32-33</b>
<b>Ice Melting .....</b>	<b>34,36</b>
<b>Matting .....</b>	<b>34</b>
<b>Shovels .....</b>	<b>35</b>
<b>Ice Scrapers .....</b>	<b>36</b>

## PAYMENT OPTIONS

We accept cash, check, charge, or account



*Pricing in this catalog may be subject to change at any time.*

# BUFFALO'S SNOVEMBER STORM



## ARCTIC SPORT Insulated Steel Toe Work Boot

Specifically designed to handle extreme weather conditions. Features a 5 mm CR flex-foam bootie with four way stretch nylon, 100% waterproof, lightweight and flexible. Fleece lined, 2 mm thermal foam underlay added to the instep area for additional warmth and comfort. EVA molded midsole with contoured footbed. Steel toe protection with added wrap-up bumper. Double reinforcements on the instep, heel and achilles. MS-1 molded outsole is rugged, aggressive and durable for maximum protection and stability. Meets ASTM F2413-11 M I/75 C/75 EH. 16 inch total height.



Item #ASPSTL(size) 7-14 **\$199.50**

## Chore Waterproof Steel Toe Work Boot

Features a 5 mm CR flex-foam bootie with four way stretch nylon. 100% waterproof, lightweight and flexible with steel toe impact protection. Durable lightweight rubber outsole, with diamond-textured toe and heel reinforcement that helps resist scuffs and scratches. Wide-cut heel base for stability. Meets ASTM F2413-11 M I/75 C/75 EH. 16 inch total height.



Item #CHS-000A(size) 5-14 **\$135.10**

## ARCTIC Insulated Steel Toe Work Boot

Specifically designed to handle extreme weather conditions. Features an 8 mm CR flex-foam bootie with four way stretch nylon, 100% waterproof, lightweight and flexible. Fleece lined, 2 mm thermal foam underlay added to the instep area for additional warmth and comfort. EVA molded midsole with contoured footbed. Steel toe protection with added wrap-up bumper. Double reinforcements on the instep, heel and achilles. Bob-Tracker molded outsole is rugged, aggressive and durable for maximum protection and stability. Meets ASTM F2413-11 M I/75 C/75 EH. 16 inch total height.



Item #ACPSTL0(size) 7-14 **\$204.95**

## Foundation All-Condition Steel Toe Boots

Features a light, self-insulating CR flex-foam bootie that provides a snug fit to keep out cold temperatures and keep workers' feet warm. Hand-layered construction is sealed for 100% waterproof reliability. Features a removable EVA sock liner. Breathable air-mesh lining wicks away humidity and perspiration. Diamond-textured toe and heel reinforcements resist scuffs and scratches. Extra wide kick off lugs for easy hands free removal. Meets ASTM F2413-11 M I/75 C/75 requirements. 9" total height.



**While Supplies Last**

Item #FRST000(size) 8-13 **\$143.25**

## Navigator 5™ Overshoe Boots

Constructed of 840 woven polyester fabric with 2.5 mil polyurethane internal bootie and rubber outsole. Features a Ninja outsole heel. Optional 10mm removable EVA insole. Hook and loop Velcro® closure, shock cord with barrel lock and Duraflex® quick release buckle. 100% waterproof. 15" total height.

#N5P3S Boot is insulated to -20°F. Provides excellent protection in extreme weather conditions. Features NEOS STABILicers® with 32 replaceable steel cleats. Comes with one cleat tool for adjustment.

#N5P3 Boot is non-insulated. Features an aggressive Vibram® Ninja outsole, heel.

Item #N5P3S(size) XS-3XL **\$132.05**

Item #N5P3(size) XS-2XL **\$117.20**



#N5P3S

#N5P3

## Voyager™ Overshoe Boots

Constructed of 500 denier nylon, 2.5 mil polyurethane laminated film. Optional 10mm removable EVA insole. Hook and loop Velcro® closure, Shock cord with barrel lock and Duraflex® quick release buckle. 11 inch total height. 100% waterproof. Excellent protection for cold weather conditions.

#VNS1BLK feature NEOS STABILicers® outsole, heel with 32 replaceable steel hardened cleats. Comes with one cleat tool for adjustments.

#VNN1BLK feature NEOS Perma outsole, heel.

Item #VNS1BLK(size) XS-3XL **\$97.60**

Item #VNN1BLK(size) SM-3XL **\$83.10**



#VNS1BLK

#VNN1BLK

## Winter-Tuff® Traction Overshoe

Tingley Winter-Tuff® ice traction overshoe with cleated outsole. Injection molded, seamless construction for 100% waterproof protection. Rust and corrosion resistant tungsten carbide studs provide excellent slip resistance on ice and snow pack. Lightweight and remains flexible in cold temperatures. Completely locks out bad weather for maximum protection up to the ankle. Excellent stretch and tear resistance for more durability, comfort and easy on, off.

**TINGLEY**  
A TRADITION SINCE 1938



#1350



#1450

Item #	Style	Fits Boot	Fits Shoe	
<b>1350SM</b>	Hi-Top	Sz 6.5-8	Sz 6.5-9.5	<b>\$47.70</b>
<b>1350MDT</b>	Hi-Top	Sz 8-9.5	Sz 9.5-11	<b>\$47.70</b>
<b>1350LGT</b>	Hi-Top	Sz 9.5-11	Sz 11-12.5	<b>\$47.70</b>
<b>1350XLT</b>	Hi-Top	Sz 11-12.5	Sz 12.5-14	<b>\$47.70</b>
<b>1350XXL</b>	Hi-Top	Sz 12.5-14	Sz 14-15.5	<b>\$47.70</b>
<b>1350XXXL</b>	Hi-Top	Sz 14-15.5	Sz 15.5-17	<b>\$47.70</b>
<b>1450SM</b>	10"	Sz 6.5-8	Sz 6.5-9.5	<b>\$56.80</b>
<b>1450MD</b>	10"	Sz 8-9.5	Sz 9.5-11	<b>\$56.80</b>
<b>1450LG</b>	10"	Sz 9.5-11	Sz 11-12.5	<b>\$56.80</b>
<b>1450XLT</b>	10"	Sz 11-12.5	Sz 12.5-14	<b>\$56.80</b>
<b>1450XXLT</b>	10"	Sz 12.5-14	Sz 14-15.5	<b>\$56.80</b>
<b>1450XXXLT</b>	10"	Sz 14-15.5	Sz 15.5-17	<b>\$56.80</b>

## Tingley Rubber Work Boots

Tingley natural rubber work over shoes and boots allow you to work comfortably in the toughest conditions. Features include heavy-duty heel kick-off cleat for no-hands removal, no lining for easy cleaning, more material in heel, toe, and sole for longer life and cleated sole for good slip resistance. Chemical resistant for acids, alcohols, bases and diluted water solutions of most chemicals that are water soluble.

Sizes: SM (6-1/2 - 8), MD (8 - 9-1/2),  
LG (9-1/2 - 11), XL (11 - 12-1/2),  
XXL (12-1/2 - 14), XXXL (14 - 15-1/2).

**Item #1300(size)** SM-3XL  
Hi-Top Over Shoe **\$19.15**

**Item #1400(size)** SM-3XL  
10" Work Boot **\$29.95**

**TINGLEY**  
A TRADITION SINCE 1938



#1300



#1400

## Waterproof PVC Overshoe Boot, 12"

**SERVUS**  
by Honeywell

Super sized to fit over bulky leather work boots. Seamless, molded, 100% waterproof construction. Self cleaning, Super Fit wide grip outsole. Features an elastic loop closure for secure comfortable fit.

Sizes: SM (6 - 8), MD (9 - 10),  
LG (11 - 13), XL (14 - 15).

**Item #11001(size)** SM-XL **\$22.50**



## 4-Buckle ATS Overshoe Boot, 12"

 **LaCrosse**

Designed to fit over deep heel footwear, the ATS Overshoe features a new traction technology that utilizes an industrial strength Tungsten Canhide stud design to provide excellent traction outdoors on the ice, yet maintain slip resistant grip on both hard and soft surfaces. The Ozone, abrasion-resistant rubber offers 100% waterproof protection. Great durability. 3M™ Scotchlite™ reflective material on heel for increased visibility. 4 non-corrosive steel buckles help ensure a snug fit.

**Item #229108(size)** 6-18 **\$101.60**



## Buckle Overshoe Boot

**RANGER**  
by Honeywell

Buckle closure provides a safe secure fit. Designed with a rugged ribbed outsole for extra traction. Made of premium grade, Ozone resistant rubber that prevents cracking for long lasting protection from rain, slush, or snow. Smooth fabric lining make them easy to slip on/off. 100% waterproof.

**Item #55202(size)** Sizes: 8-16 **\$38.05**  
**Item #55205(size)** Sizes: 8-16 **\$38.05**



#55202

#55205

## 5-Buckle Overshoe Boot, 14"

Made of a premium rubber compound with excellent tensile strength for great durability and tear resistance. Industrial strength non-corrosive metal buckles allow for easy on, off and adjustable fit. Maintains flexibility in cold conditions. Abrasion resistant Hex-tread outsole provides superior traction and the 90 degree heel increases stability on the ladder rungs. Reflective heel provides visibility in low light conditions. 100% waterproof. Ozone resistant.

**Item #00267140(size)** 8-16 **\$65.40**



 **LaCrosse**

## Coolmax® Insulating Workwear Sock

Provides a dry micro-climate, insulation and support to the feet. Insulating Coolmax® fabric keeps feet dry and warm. Steel Toe for superior strength and durability. Charcoal point Coolmax® allows for great ventilation. Black.

**Item #75724** Fits: 5-6.5 **\$24.00/PR**  
**Item #757247/8.5** Fits: 7-8.5 **\$24.00/PR**  
**Item #757249/11.5** Fits: 9-11.5 **\$24.00/PR**  
**Item #7572412/13** Fits: 12-13 **\$24.00/PR**  
**Item #7572414/16** Fits: 14-16 **\$24.00/PR**



**HH**  
workwear



## Wolverine Novack WP 8" Composite Toe Boots

- Electrical Hazard
- Slip & Oil Resistant
- Waterproof
- Insulated
- Moisture Managing Mesh with breathable waterproof membrane
- Vibram Rubber Outsole
- Removable Full Cushion Footbed
- 1000 grams of 3M™ Thinsulate™ Ultra
- Composite Toe ASTM F2413-11 M I/75 C/75 EH

MED: 7-12,13,14 WIDE: 7-12,13  
**Item #30121(size) \$140**



## Carolina Gaucho WP 8" Composite Toe Boots

- Electrical Hazard
- Slip & Oil Resistant
- Waterproof
- Insulated
- Waterproof Crazy Horse Leather Upper
- Removable AG7™ Polyurethane (PU) Footbed
- EVA Midsole, Pillow Cushion™ Insole
- Non-Metallic Shank
- Cement Construct.
- 600 grams 3M™ Thinsulate™

MED: 8-12,13,14 WIDE: 8-12,13,14  
**Item #CA8521(size) \$145**



## Timberland PRO® WP 8" Composite Toe Boots

- Electrical Hazard
- Slip & Oil Resistant
- Waterproof
- Insulated
- Removable Dynamic Anti-Fatigue Insole
- Dual Density Polyurethane (PU) Midsole
- Mesh Lining With Antimicrobial Treatment
- Fiberglass Shank
- 600 grams of Thermolite®
- Cold Formula (TPU) Outsole

MED: 7-12,13,14,15 WIDE: 7-12,13,14,15  
**Item #89628(size) \$195**



## Timberland PRO® WP Steel Toe Boots

- Electrical Hazard
- Slip & Oil Resistant
- Waterproof
- Insulated
- 24/7™ Comfort Suspension System w/ Removable PU Cushion Footbed
- Seam Sealed Waterproof Leather
- Nylon Shock Diffusion Plate
- 8"- 400, 6"- 200 grams of Thermolite®
- Timberland PRO Rubber Outsole

MED: 7-12,13,14,15 WIDE: 7-12,13,14,15  
**Item #26002(size) 8" \$140**  
**Item #65016(size) 6" \$125**



## Wolverine DuraShocks® Steel Toe Boots

- Electrical Hazard
- Slip & Oil Resistant
- Waterproof
- Insulated
- MADE IN THE USA
- Direct Attach Construct.
- Waterproof Full Grain and Wolverine Perf. Leather Upper
- 30 Day Comfort Guarantee
- Moisture Managing Mesh Lining
- 400 grams of 3M™ Thinsulate™ Ultra
- Wolverine Durashocks Vibram Rubber Outsole

MED: 7-12,13,14 WIDE: 7-12,13  
**Item #3176(size) 8" \$165**  
**Item #3177(size) 6" \$155**



## Timberland PRO® Women's WP 8" Alloy Toe Boots

- Electrical Hazard
- Slip & Oil Resistant
- Waterproof
- Insulated
- Waterproof Leather & Membrane
- Mesh Lining w/ Antimicrobial Treatment
- Contoured Single-Density Open-Cell Polyurethane (PU) Footbed
- Fiberglass Shank
- 200/400 grams of Zoned Insulation

MED: 5.5-10,11 WIDE: 5.5-10,11  
**Item #88116(size) \$145**

## Over-the-Shoe Slush Boot

17" Over-the-Shoe slush boot. These slush boots provide 100% waterproof protection and are designed to fit easily over shoes and work boots. Ideal for light to heavy duty applications and sanitation. Features a cross rib outer sole to reduce slippage and a netted lining for easy on and off. Adjustable side strap to keep the elements out. Yellow with black sole.

**Item #9085(size)** 7-18 **\$19.70**

**DIVAL**  
Safety & Supplies for Life



## 100% Polypropylene Non-Skid Shoe Covers

100% Polypropylene shoe covers, blue with tread white bottom. Offers elastic opening that provides a snug fit around the ankle and the white non-skid sole gives added traction. Latex free. Easily fits over shoes. 6" tall. 150 pair per dispenser case.

**Item #SCNWI** 13" L x 6" H **\$38.05/CS**  
**Item #SCNWIXL** 15" L x 6" H **\$38.05/CS**  
**Item #SCNWIXXL** 16.5" L x 6" H **\$39.10/CS**

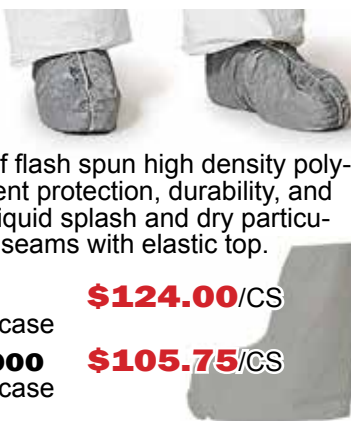


## DuPont™ Tyvek® FC Slip Resistant Boot Covers

Tyvek® FC -- a DuPont™ Tyvek® protective fabric with a skid resistant friction coating. Used exclusively for shoe and boot covers and skid-resistant booties in select Tyvek® coveralls. Composed of flash spun high density polyethylene which provides excellent protection, durability, and comfort. Protects against light liquid splash and dry particulates. Non-skid bottom, serged seams with elastic top.

**Item #4500** **\$124.00/CS**  
 Shoe Covers 5" High, 200 per case  
**Item #FC454SGY00010000** **\$105.75/CS**  
 Boot Covers 18" High, 100 per case

DuPont™  
**Tyvek®**



## Heavy-Duty 5 mil Boot & Shoe Covers w/ Ties

Clear heavy-duty 5 mil polyethylene boot and shoe covers with ties. Easily slip over shoes and boots with a height of 18". Ties at top of shoe cover provide added protection from dry particulates and light liquid splash. Can also be used between overshoe boots and work boots. 50 per dispenser box. 10 boxes per case.

**Item #B300** **\$12.80/BX**



## MicroMax® NS Boot Covers w/ Vinyl Sole

Economical, general purpose shoe covers provide microporous protection from dirt, grease, grime and light chemical splash. Great for environments where hazardous or nonhazardous contaminants maybe present. MicroMax® NS is strong, wet or dry. Vinyl sole allows for great abrasion resistance. 17" high. Elastic top. Serged seams. 200 pairs per case.

**Item #CTL905(size)**  
 MD-XL **\$225.00/CS**



 **Lakeland**  
INDUSTRIES, INC.

## Yaktrax® Pro Winter Traction

The Yaktrax® Pro will instantly give you better traction, confidence and safety on packed snow or ice. Made with high strength abrasion resistant 1.4mm steel coils and heavy duty natural rubber material, it can easily conform to the shape of your boot or shoe. Its spikeless ultra weight skidlock coil design provides 360° of traction and helps reduce the risk of slips and falls. Can be worn in temperatures as low as -41°F. Fits men's sizes 5-14+.



 **YAKTRAX**  
WINTER TRACTION FOR ALL WEATHER

**Item #YAKPSM** SM (Fits Size 5-8.5) **\$31.25**  
**Item #YAKPMD** MD (Fits Size 9-11) **\$31.25**  
**Item #YAKPLG** LG (Fits Size 11.5-13.5) **\$31.25**  
**Item #YAKPXL** XL (Fits Size 14+) **\$31.25**

## SureStep Anti-Slip Boot Covers

Features a revolutionary monofilament coating that offers excellent anti-slip properties. Unique coating makes the boot covers stronger and more durable than traditional overshoes resulting in a safer yet more economical product. Liquid resistant, lint free boot cover with elastic top and ankle for secure comfortable fit. White with blue anti-slip sole. 18" height.

**Item #MGBLSSXL** **\$191.70/CS**  
 Fits Sizes 8-12 200 per case  
**Item #MGBLSSXXL** **\$220.85/CS**  
 Fits Sizes 12-14 150 per case

 **MICROCHEM**  
High Performance Protection in Comfort



## Latex Boot Covers

Stretchable, seamless boot covers protect against a wide range of hazardous and non-hazardous materials. Strong enough to be worn many times, yet economical to be disposed of after a single use. 100% waterproof. Ribbed, textured soles provide reliable traction. .60mm latex rubber. 12" height. 50 pair per case.

**Item #24009002(size)**  
 Sizes: SM-3XL **\$5.55/PR**

**DIVAL**  
Safety & Supplies for Life



## YakTrax® Boot & Shoe Scrubber

Offers an efficient solution for removing excess dirt and debris from all types of boots and shoes. Simply mount the boot scrubber onto any flat surface. Made of steel and plastic, this heavy duty boot scrubber will last for years to come. Perfect for mud room, deck and garage.

**Item #08401** **\$25.95**



 **YAKTRAX**  
WINTER TRACTION FOR ALL WEATHER



## Yaktrax® Walk Winter Traction

Lightweight, easy to use traction device that provides great stability while walking on snow or ice. Abrasion resistant, high strength, skidlock coil design. Reduces risk of falls and injuries while walking. 360° traction.



<b>Item #08006XS</b>	XS (Fits Size 1-4.5)	<b>\$21.90/PR</b>
<b>Item #08001SM</b>	SM (Fits Size 5-8.5)	<b>\$21.90/PR</b>
<b>Item #08003MD</b>	MD (Fits Size 9-11)	<b>\$21.90/PR</b>
<b>Item #08005LG</b>	LG (Fits Size 11+)	<b>\$21.90/PR</b>

## ICEtrekkers® Winter Traction

ICEtrekkers® Diamond Grip™ winter traction. Patented Diamond bead design provides hundreds of biting edges for superior traction in all snow and ice conditions. Comfortable for prolonged use. Durable rubber sling remains elastic in sub-zero temperatures. For more info please visit [www.DiValSafety.com](http://www.DiValSafety.com)



**ICEtrekkers**  
Walk, work & play on snow & ice.

<b>Item #06004IT</b>	SM (Fits Size 5-6)	<b>\$43.70/PR</b>
<b>Item #06005</b>	MD (Fits Size 6.5-9)	<b>\$43.70/PR</b>
<b>Item #06006IT</b>	LG (Fits Size 9.5-12.5)	<b>\$43.70/PR</b>
<b>Item #06007</b>	XL (Fits Size 13+)	<b>\$43.70/PR</b>

## STABILicers™ Walk Non-Slip Ice Cleats

STABILicers™ Walk's molded-in, multi-directional steel ice cleats bite into ice and snow allowing you to stride naturally through winter's worst conditions. STABILicers™ Walk folds up nicely and is small enough to be carried in a purse, briefcase, or in your car's glove box. Keep a pair on hand and don't let winter catch you off guard.



<b>Item #STABSMLITE</b>	<b>\$25.80/PR</b>
Fits Men's: 4-7 \ Women's: 5-8	
<b>Item #STABMDLITE</b>	<b>\$25.80/PR</b>
Fits Men's: 7.5-10 \ Women's: 8.5-12	
<b>Item #STABGLITE</b>	<b>\$25.80/PR</b>
Fits Men's: 10.5-13	
<b>Item #STABXLLITE</b>	<b>\$25.80/PR</b>
Fits Men's: 13.5-16	

## STABILicers™ Maxx Ice Cleats

STABILicers™ Maxx are best in class. Long-lasting soles with heat-treated, replaceable steel cleats bite into the slickest ice and snow. STABILicers™ Maxx easily attach to your favorite shoes or boots with hook-and-loop fasteners. Never let icy conditions slow you or your workers down.



<b>Item #STAB(size)</b>	SM-2XL	<b>\$38.55/PR</b>
-------------------------	--------	-------------------

## Winter-Tuff® Ice Traction Footwear

High stretch rubber stays strong and flexible in cold temperatures. Carbon steel studs grip ice and snow surfaces and help avoid any slips and falls. Fits a variety of footwear styles for both men and women. Easy to take on and off. Just pull over existing footwear. Black.



<b>Item #1150T(size)</b>	MD-XL	<b>\$15.40/PR</b>
--------------------------	-------	-------------------

## TREX™ Ice Traction Device

Rugged steel studs for grip and stability. Stretchable rubber for easy on/off. Flexibility allows foot to move freely in any condition.



Size MD: 5-8, LG: 8-11, XL: 11-14, 2XL: 14-16	
<b>Item #6300(size)</b>	<b>\$15.40/PR</b>

## TREX™ One-Piece Ice Traction Device

Heat-treated carbon steel studs for tenacious grip and stability. Flexible to -40°F.

**#6304** 12 rugged studs, stretchable rubber construction. Contoured "step in" 3D design that easily wraps boots and shoes for superior fit.

**#6310** 10 rugged studs, aggressive tread connects mid-foot and heel stud zones. Reflective pull-on tab adds enhanced visibility.

\*Image not shown



<b>Item #6304(size)</b>	<b>\$16.10/PR</b>
SM: 5-7, MD: 7-9, LG: 9-11, XL: 11-14	
<b>Item #6310(size)</b>	<b>\$18.90/PR</b>
MD: 5-8 LG: 8-11 XL:: 11-14	

## TREX™ 6315 Strap-On Heel Ice Traction Device

Rugged steel plates turn boot heels into ice picks, leaving the mid-foot free for vehicle operation. Corrosion-resistant steel heel plate provides tenacious grip and stability on ice and snow. Heel-only design leaves mid-foot free for unobstructed vehicle operation. Channeled design will not retain ice, snow or debris. Rugged webbing / hook and loop strap provides a secure fit. Rear reflective accents enhance worker conspicuity.



<b>Item #6315MDLG</b>	5-11	<b>\$15.40/PR</b>
<b>Item #6315XL</b>	11-16	<b>\$15.40/PR</b>

## TREX™ 6320 Spike Ice Traction Device

Durable stainless steel aggressive chain. Spike system offers tenacious grip and stability on ice and snow. Innovative heel spike plate design provides enhanced traction on uneven surfaces. Hi-Viz orange stretchable rubber rings ensure a secure fit and maintains flexibility in extremely cold temps.

SM: Size 5-7  
MD: Size 7-9  
LG: Size 9-11  
XL: Size 11-14



<b>Item #6320(size)</b>	<b>\$38.50/PR</b>
-------------------------	-------------------

## **Kastrup Base Layer Polypropylene Thermals**

Multipurpose base layer black thermal clothes designed for high activity work at cool temperatures. Made of 100% polypropylene filament yarns and does not absorb perspiration. Extremely quick drying. Lightweight and non-allergic. Ideal for temperatures ranging from 14 to 50°F.



### **Kastrup Crewneck Long Sleeve Shirt**

Extended back for added protection. Long sleeve crewneck base layer shirt.

**Item #75016BLK(size) SM-2XL \$40.00**

Available at additional cost: 3XL-4XL

### **Kastrup Pants**

Base layer pants with fly front.

**Item #75416BLK(size) SM-2XL \$40.00**

Available at additional cost: 3XL

## **Roskilde Base Layer Merino Thermals**

Made of 43% polypropylene filament yarns and 57% merino wool. Fabric transfers moisture from skin to outer fabric for evaporation. Extremely quick drying. Lightweight and non-allergic. Ideal for temperatures ranging from -4° to 32°F. Long sleeve crewneck base layer shirt has extended back. Base layer thermal pants also available.



**Item #75026BLK(size) SM-2XL \$80.00**

Crewneck Long Sleeve Shirt

**Item #75425BLK(size) SM-2XL \$80.00**

Long Underwear Pants

Both available at additional cost: 3XL-4XL

## **Carhartt® Midweight Cotton Union Suit/Coverall**

Made of premium 8-ounce fabric, our midweight cotton union suit delivers total body warmth in one comfortable garment. It's rib-knit neck and cuffs retain warmth, and seams are flat lock stitched for added durability. For comfort and convenience, the fly and back opening feature button closures. Reinforced stitching on all seams. Tagless neck label.



**Item #K226RED(size) MD-2XL \$39.99**

## **Carhartt® Base Force™ Cotton Crewneck Shirt**



Made of warm 9.5-ounce, 100% ring-spun cotton. It also features Stain Breaker™ technology that releases stains in the wash. Features reinforced stitching, a tagless neck label, and rib-knit cuffs that retain warmth. Fabric wicks away sweat for comfort.

**Item #100639001(size) SM-2XL \$29.99**

**Item #100639103(size) SM-2XL \$29.99**

**Item #100640001(size) SM-2XL \$29.99**

**Item #100640103(size) SM-2XL \$29.99**

Available at additional cost: 3XL-4XL



#100639001



#100639103



#100640103



#100640001

## **Ergodyne CORE Performance Work Wear® Base Layer Garments**

Comfort design with medium weight wicking stretch fabrics for warmth. Anti-stink treatment to help workers remain unscented. Reflective accents help keep workers safe and seen. 50+ UPF for protection against harmful UV rays. Easily cleaned thermal, ripped fit, base layer work wear.



### **CORE Performance Work Wear® Base Layer Shirt**

Features flat seams with long tail cut. Reflective accents help keep workers safe and seen.

**Item #6435(size) MD-3XL \$44.80**

### **CORE Performance Work Wear® Base Layer Thermal Bottoms**

Features flat seams and tagless waistband.

**Item #6480(size) MD-3XL \$37.50**

## **Heavyweight Crew Neck Thermal Top**

This all natural long sleeve thermal top helps trap and retain body heat for maximum warmth without added weight or bulkiness. Durable and breathable, this thermal is ideal to wear in colder environments when extra clothing is needed. Machine washable. Longsleeve.



**Item #2216MLS3XL \$5.50**

Heavyweight 3XL

While Supplies Last

## **Heavyweight Cotton Thermal Pant**

This all natural thermal pant helps trap and retain body heat for maximum warmth without added weight or bulkiness. Durable and breathable, this thermal is ideal to wear in colder environments when extra clothing is needed. Machine washable.

**Item #2216MDRT3XL \$5.50**

Heavyweight 3XL Tall

**Item #2216DNT4XL \$5.50**

Heavyweight 4XL

While Supplies Last



## Economic Winterliner

- Lightweight protection that can be worn under caps and hats
- Two string ties for comfortable, close fit
- Inner shell: napped flannel
- Meets 16 CFR 1610, Class 1

#PL20

**\$2.10**



## Mid-weight Fleece Liner

- Can be worn under caps and hats
- Hook-and-loop fastener for a comfortable, close fit
- Outer shell: cotton twill
- Lining: polyester fleece
- Thread: spun poly
- Meets 16 CFR 1610, Class 1

#PL50

**\$3.65**

**JACKSON**  
SAFETY



## Heavyweight Fleece Liner

- Can be worn under caps and hats
- Hook-and-loop fastener for a comfortable, close fit
- Outer shell: cotton twill
- Lining: polyester fleece
- Meets 16 CFR 1610, Class 1

#PL95

**\$5.20**



## Sherpa Lined Winterliner

- Ideal for cold-weather environments
- Long nape offered for extra neck coverage from wind
- Outer shell: cotton twill
- Lining: polyester sherpa
- Meets 16 CFR 1610, Class 1

#PL94

**\$7.50**



## Quilted Fleece Winterliner

- Can be worn under caps and hats
- Hook-and-loop fastener for a comfortable, close fit
- Water-resistant material
- Outer shell: quilted nylon with extra thick foam fill
- Lining: polyester fleece
- Meets 16 CFR 1610, Class 1

#PL40

**\$5.20**



## Dielectric Deluxe Liner

- Ideal for extreme cold-weather environments
- Full head and neck coverage with extra-long nape and wraparound collar
- Shoulder length liner can be tucked into jacket
- Outer shell: cotton twill
- Lining: polyester sherpa
- Meets 16 CFR 1610, Class 1

#PL90

**\$10.40**



## Heavyweight Fleece Liner

- Ideal for cold-weather environments
- Full head and neck coverage with extra-wide wrapped collar
- Shoulder length liner can be tucked into jacket
- Hook-and-loop fastener straps
- Outer shell: heavy-weight fleece
- Meets 16 CFR 1610, Class 1

#22383

**\$10.40**



## FlashTex® Nomex® NPR Winterliner

- Provides protection from electrical arc energy exposure
- Outer shell: Retains FR protection throughout life of the product - 100% Nomex® IIIA (ATPV Outer - 96 cal/cm<sup>2</sup>)
- Inner shell: 100% Proban® cotton (ATPV Inner - 76 cal/cm<sup>2</sup>)
- Cotton chinstrap Leather/Nomex® tabs attach to hard hats
- HRC Level 4 Protection

#3005354

**\$21.45**

## Balaclava Ski Mask

The Woolpower® balaclava ski mask is made from Ullfrotte original fabric, a Merino wool blend. The unique construction of inner facing terry loops creates a warm insulating layer, yet efficiently wicks moisture away from the face. Machine washable and warm dryer safe. Versatile face opening allows for multiple configurations. Available in two weights. 400 g/m<sup>2</sup> has elongated flaps for coverage below the neck. Green.

**Woolpower**  
OUTDOOR

#991982

#96549866



## Acrylic Knit Face Mask

This acrylic knit face mask features a tight fitting three hole design that helps protect from wind and cold. Great to wear in outdoor applications. Full face and neck coverage. Soft. Lightweight. Available in black and navy.



Item #6280BLK  
Item #6280NVY

**\$8.35**  
**\$8.35**

## Heavyweight Full Face Liner

This 100% super heavyweight polyester fleece is single layered and is shoulder length. It features a mesh mouth and nose opening. One size fits most. Full face helmet liner.

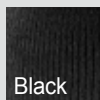


Item #LF648  
Item #LF649

Navy  
Camo

**\$8.35**  
**\$9.40**

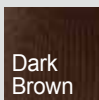
# Caps & Face Masks



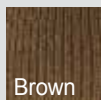
Black



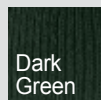
Coal/Heather



Dark Brown



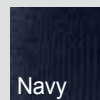
Brown



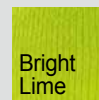
Dark Green



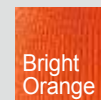
Army Green



Navy



Bright Lime



Bright Orange

- 100% acrylic, stretchable rib-knit fabric

- Carhartt logo sewn on the front

- One-size-fits-all



## Acrylic Knit Winter Hat

\*Available in Black, Coal/Heather, Dark Brown, Brown, Dark Green, Army Green, Navy, Bright Lime, Bright Orange

**Item #A18(color) \$8.99**



## Knit Hat With Visor

\*Available in Black, Coal/Heather, Brown, Army Green, Navy

**Item #A164(color) \$9.99**



## 100g Insulated Face Mask

\*Available in Black, Brown, Coal/Heather, Bright Lime, Bright Orange

**Item #A161(color) \$12.99**



## Fleece 2-in-1 Headwear

2-in-1 fleece headwear combines a fleece hat with a pull-down face mask that tucks up into the hat when not in use. The hat is 100% polyester fleece and the face mask is a 90% polyester / 10% spandex blend. For added comfort, the inner mask features a moisture-wicking, anti-microbial finish. The Carhartt® logo is sewn on the front.

\*Available in Black, Moss, Dark Brown, Coal/Heather

**Item #A202(color) \$12.99**



## Force Helmet-Liner Face Mask

Designed for use in cold weather under hard hats, our helmet-liner mask comes in a 92% polyester / 8% spandex blend with a fleeced interior for warmth. Offering full facial protection, the mask pulls down below the chin when not needed and includes a moisture-wicking, anti-microbial inner finish. Flat-seam construction enhances comfort and its protection extends below the neck line.

\*Available in Black, Coal/Heather, Bright Orange

**Item #A267(color) \$16.99**



Our **MyDesign Center** Offers Custom Embroidery

**Call To Place Your Order Today!**



## Heavyweight Acrylic Knit Cap

Heavyweight 100% acrylic knit fabric. Cuffed style design. Great for added head and ear coverage in colder conditions. One size fits all.

\*Available in Black, Heather Gray, Navy, Red, Flame Orange

**Item #1501KC(color) \$3.85**



## Double Layer Insulated Cap

Helly Hansen double layer beanie cap. Dry next to skin, non-allergic 100% polypropylene.

<b>Item #79833BLK</b>	Black	<b>\$16.00</b>
<b>Item #79833NVY</b>	Navy	<b>\$16.00</b>
<b>Item #79833OLV</b>	Olive	<b>\$16.00</b>

## Performance Work Wear® Fleece Cap

Polyester fabric combined with micro fleece for warmth and comfort. Multi-climate usage and blocks wind, sun and dust. Stretchable, comfortable and seam free. Machine washable. One size fits most. Flame design.



**While Supplies Last**



**Item #6488FL \$10.95**

## N-Ferno® 100% Acrylic Knit Winter Cap

Snug fitting knit with soft CoolMax™ liner. 100% acrylic shell. "Be Tenacious" message across the front. Great to wear in cold weather conditions. One size fits most. Black.



**Item #6819BT \$20.75**

## Roskilde Balaclava Full Face Mask

Provides great protection for face, head and neck. Made of 43% polypropylene filament yarns and 57% merino wool. Does not absorb perspiration. Extremely quick drying.

Lightweight and non-allergenic. Ideal for temperatures ranging from -4° to 32°F. Versatile face opening allows for multiple configurations. One size fits most. Available in black and navy.

<b>Item #75726BLK</b>	<b>\$28.00</b>
<b>Item #75726NVY</b>	<b>\$28.00</b>



## Roskilde Pro Balaclava

Multi-purpose base layer for work and outdoor activities during cold and very cold conditions. Effective moisture transportation with quick drying and non-allergenic. Medium weight hybrid construction with polypropylene on the inside next to the skin and wool on the outside. Wool reinforces insulation properties. Ideal for temperatures ranging from -4° to -32°F. Breathable, stretchable, and one size fits most. Black.

**Item #79869BLK \$40.00**



## Roskilde Neck Gaiter

Base layer neck gaiter for work and outdoor activities during cold and very cold conditions. Made of 44% polypropylene filament yarns and 56% merino wool. Does not absorb perspiration. Extremely quick drying. Lightweight and non-allergenic. Insulates against cold weather. Ideal for temperatures ranging from -4° to 32°F. Single layer. One size fits most. Black.

**Item #79875 \$24.00**



## N-Ferno® Extreme Balaclava

High performance cold weather mask to combat the damaging effects of cold air. Two-piece, 320g fleece design providing excellent coverage for face, neck and head. Built in Hot Rox™ heat exchange provides warm air for inhalation in even the most extreme conditions. Form fitting design prevents eyewear from fogging. Adjustable mask featuring hook and loop attachments. Completely removable. One size fits most. Black.

**Item #6970ERG \$41.70**



## Wind-Proof Hinged Balaclava

Stretchable fleece with wind-resistant fabric covering the nose and neck for the ultimate in winter protection and comfort. Unique hinged design. 3-panel construction with flat lock stitching for a comfortable "made just for you" fit. Reflective accents help keep workers safe and seen. Long length.

**Item #6823 \$13.20**



## N-Ferno® Classic Trapper Hat

Provides a snug barrier against wind and cold. Nylon shell is durable, water and wind-resistant for added warmth. Trimmed with black faux fur, includes a crown lining of quilted satin and has a PU backing. Features a YKK® buckle with strap and button flaps with side holes for hearing. Ideal for use in construction, drilling and mining, oil and gas refining, iron and steel work, landscaping or grounds, cold storage and warehousing, fire, rescue and EMT, and material handling. Black.

**Item #16845E \$28.25**





#K124



#K121



#K122

carhartt 

## Carhartt® Sweatshirts

Carhartt® 10.5-ounce mid-weight sweatshirts work well when the weather turns cool. Fleece blended liner, rib knit cuffs and waist band help provide plenty of warmth while blocking out the cold. Carhartt® logo sewn on front. K121 and K122 feature attached hood with drawstrings and hand-warmer pockets. 50/50 cotton/polyester fabric. \*Heather Gray is 70/30 cotton/polyester, \*\*Charcoal is 55/45 cotton/polyester.

**#K124** Crewneck MD-2XL **\$29.99**  
Available in Black, Heather Gray, Navy

**#K121** Pullover Hoodie MD-2XL **\$34.99**  
Available in Black, Heather Gray, Navy, Charcoal, Olive, Dark Brown

**#K122** Full Zip Hoodie MD-2XL **\$39.99**  
Available in Black, Heather Gray, Navy, Charcoal, Olive, Dark Brown  
*Available at additional cost 3XL, 4XL*

## Quilted Flannel Lined Jacket

Carhartt® duck active jacket, flannel lined. Warm, versatile and rugged, this duck active jacket is made of heavyweight 12 ounce, firm hand, 100% ring spun cotton duck. The body and hood are lined with quilted flannel, and the sleeves are lined with quilted nylon. For added storage, there are also two inside pockets.

**#J140BLK(size)\*** SM-2XL Black  
**#J140BRN(size)\*** SM-2XL Brown  
**#J140DNY(size)** LG-XL Navy

*\* Available at additional cost: 3XL-4XL & Tall Sizes*

carhartt 



**\$79.99**  
**\$79.99**  
**\$79.99**

## Traditional Arctic Quilt Lined Coat

Features a nylon lining quilted to arctic weight polyester insulation. Made of 12 ounce, 100% ring spun cotton duck, the coat is equipped with two chest, two large lower front, and two inside pockets. The corduroy collar has under collar snaps for an optional hood.

**#C003BLK(size)** MD-2XL Black **\$99.99**  
**#C003BRN(size)** MD-2XL Brown **\$99.99**  
**#C003DNY(size)** MD-2XL Navy **\$99.99**

*Available at additional cost: 3XL-4XL & Tall Sizes*

carhartt 



## Carhartt® Realtree Xtra® Camo Active Jac

Realtree Xtra® camo active jac is thermal-lined, which is lighter weight. It features a 12 ounce, 100% cotton duck with Realtree Xtra® camouflage pattern, 100% polyester thermal lining, two large lower-front and two inside pockets and rib-knit cuffs and waistband. It also has an attached thermal-lined hood with drawcord closure and triple-stitched main seams.

**#J220977(size)** SM-2XL **\$84.99**  
*Available at additional cost: 3XL*

carhartt 



## Traditional Arctic Quilt Lined Jacket

Tested tough, this jacket is built strong with 12 ounce, 100% ring spun cotton duck and insulated with an arctic weight quilted nylon polyester lining. The corduroy collar has under collar snaps for an optional hood, and rib knit storm cuffs provide added warmth. Features two deep hand warmer pockets, and two inside pockets.

**#J002BLK(size)** SM-2XL **\$84.99**  
*Available at additional cost: 3XL & Tall*

carhartt 



## Extreme Deluxe Arctic Winter Coat

Water repellent, it's made of 1000-denier Cordura® nylon with a nylon lining quilted to arctic weight polyester insulation. The corduroy collar has under collar snaps for an optional hood. There are two chest, two lower front, and two inside pockets. The split back with bi-swing design and pleated elbows allow for easier movement.

**#C14BLK(size)** SM-2XL **\$119.99**  
*Available at add'l cost: 3XL-5XL & Tall*

carhartt 



**DIVAL**  
MyDesign Center



Our **MyDesign Center** Offers  
Custom Embroidery

Call To Place Your Order Today!

## Weathered Canvas Shirt Jac

Made of 9-ounce, 100% cotton washed canvas and 100% cotton flannel lining. Garment is washed for soft finish and has antique-finish brass snaps throughout. Features include two chest pockets with rivet reinforcements, an interior pocket, and two-snap adjustable cuffs with extended plackets. Bi-swing back for range of movement and triple-stitched main seams. Original Fit.

<b>Item #100590001(size)</b>	Black	SM-2XL	<b>\$59.99</b>
<b>Item #100590039(size)</b>	Gravel	SM-2XL	<b>\$59.99</b>
<b>Item #100590316(size)</b>	Moss	SM-2XL	<b>\$59.99</b>

Available at additional cost: 3XL



## Crowley Hooded Jacket

Made of 13.7-ounce, 90% nylon, 10% spandex with 94% polyester, 6% spandex backing and Rain Defender™ durable water-repellent finish. Crowley Jacket is wind resistant with draw-cord adjustable hood and center front zipper with chin protector. Features include left chest pocket, two lower front pockets with zippers and a large interior document pocket. Hook-and-loop adjustable cuffs and adjustable draw-cord bottom hem. Triple-stitched main seams.

<b>Item #101300001(size)</b>	Black	SM-2XL	<b>\$119.99</b>
<b>Item #101300908(size)</b>	Brown	SM-2XL	<b>\$119.99</b>

carhartt 



## Quick Duck® Jefferson Traditional Jacket

Made of 8.5-ounce, 60% cotton, 40% polyester canvas with Rain Defender™ water-repellent finish. Material is 30% lighter and ounce-for-ounce as durable as sandstone. Constructed with nylon lining quilted to 80g 3M™ Thinsulate™ insulation in the body and sleeves. Features include two chest pockets with flaps and snap closures, two large lower-front pockets, two inside pockets, and left chest interior pocket with media port to inner garment. Pleated elbows and inner sleeve rib-knit storm cuffs with angled cuff openings. Split back design with pleated bi-swing back. Triple-stitched main seams.

<b>Item #101492001(size)</b>	Black	SM-2XL	<b>\$119.99</b>
<b>Item #101492908(size)</b>	Brown	SM-2XL	<b>\$119.99</b>

carhartt 



## Carhartt® Bad Axe Jacket

Constructed of a rugged nylon shell with a durable water repellent (DWR) finish with three-layer waterproof breathable membrane, it's lined for comfort with a polyester tricot bonded interior. Zippered under-arm and side vents add ventilation, and hook-and-loop adjustable cuffs help seal out the wind and rain. The attached hood with draw-cord adjuster adds protection, and the draw-cord adjustable hem provides a great fit. Don't forget your cell phone and tools; the left-chest map pocket features a media port to inner garment, and two lower-front slash pockets provide storage. The jacket is Carhartt® strong with triple-stitched main seams along with stretchable heavy-duty nylon overlays on elbows and shoulders, plus heavy-duty nylon reinforcements at the cuffs and hem. There are waterproof zippers throughout and fully taped waterproof seams.

<b>Item #100259001(size)</b>	Black	SM-2XL	<b>\$279.00</b>
------------------------------	-------	--------	-----------------

carhartt 



## Carhartt® Huron Jacket

The Huron jacket stops every drop but lets body heat escape throughout your workday. Built with a rugged 3-ounce, 100% nylon ripstop shell that resists rips and snags, it features a durable water-repellent (DWR) finish, waterproof breathable membrane, and fully taped waterproof seams. Additional protection is provided by its attached hood with draw-cord adjuster, and full-length front zipper with outer and inner storm flaps. Front chest pocket with flap and snap closure, and two lower-front slash pockets with zipper closures. The hook-and-loop adjustable waist and cuffs deliver an excellent fit, and two-way zippered side seams allow you to adjust ventilation or access tool belts.

<b>Item #100265001(size)</b>	Black	SM-2XL	<b>\$99.99</b>
<b>Item #100265066(size)</b>	Ash	SM-2XL	<b>\$99.99</b>
<b>Item #100265435(size)</b>	Blue	SM-2XL	<b>\$99.99</b>
<b>Item #100265316(size)</b>	Moss	SM-2XL	<b>\$99.99</b>

Available at additional cost: 3XL

carhartt 



carhartt 

## Carhartt® Quilt Lined Duck Bib Overall

Carhartt® Men's duck bib overalls are quilt lined to keep out the chill. Made of 12 ounce heavy duty cotton duck, it has a 100% nylon quilted polyester mid-weight lining. It features a zippered fly, leg zippers that open to knee with protective wind flap, multiple tool and utility pockets, and a hammer loop. It also has triple stitched main seams, metal rivets at stress points and double knees to accommodate knee pads. Quilt lined duck bib overall. Call for sizing availability.

Item #	Waist	Length	Color	
<b>R02BLK(size)</b>	32"-56"	30"-36"	Black	<b>\$89.99</b>
<b>R02BRN(size)</b>	30"-60"	30"-48"	Brown	<b>\$89.99</b>
<b>R02DNY(size)</b>	40"-54"	30"-32"	Navy	<b>\$89.99</b>



carhartt 

## Carhartt® Extremes® Zip-To-Waist Biberall

Men's Extremes® Zip-To-Waist Biberall is water repellent and designed for the coldest conditions. Made of 1000 denier Cordura® nylon, it's lined in arctic weight 100% quilted nylon polyester. It features a zipper front and leg zippers that zip to the hip and are covered with snap close wind flaps. It also has double knees with cleanout bottoms to accommodate knee pads and zippered hand pockets.

Item #	Waist	Length	
<b>R12BLK(size)</b>	32"-50"	28"-34"	<b>\$119.99</b>



carhartt 

## Carhartt® Arctic Quilt Lined Bib Overall

Carhartt® Men's duck bib overall is arctic quilt lined to keep you warm on the job site. Made of 12 ounce 100% cotton duck, it is lined with quilted 100% arctic weight nylon. It features a zipper fly, multiple tool and utility pockets, a hammer loop, legs that zip to knee and have protective wind flaps and double knees with cleanout bottom to accommodate knee pads.

Item #	Waist	Length	Color	
<b>R03BLK(size)</b>	32"-50"	28"-33"	Black	<b>\$99.99</b>
<b>R03BRN(size)</b>	32"-50"	28"-33"	Brown	<b>\$99.99</b>



## Helly Hansen Rain Gear RealTree™ Camouflage

### Roan Anorak Camouflage RealTree™ Raincoat

Polypropylene coated on knitted polyester. Features include a hood made for helmets with draw cord adjustment and Velcro® adjustment on top. Chest pocket with snap closure. Neoprene knit wrist cuffs. Draw cord adjustment at hem for secure, comfortable fit. Waterproof.

**Item #70206RT(size)** SM 2XL **\$112.00**  
Available at additional cost: 3XL-4XL

### Camouflage RealTree™ Waist Pants

Features include a MicroWeld™ waterproof seam construction. Elastic waist band with draw cord. Double layer Impertech™, edge stitched and welded on seat and knees. 13 inch zipper and snap adjustment at hem. Blood-borne pathogen tested. Camouflage.

**Item #70448RT(size)** SM-2XL **\$90.00**  
Available at additional cost: 3XL-4XL



## Helly Hansen Boden Down Parka

Helly Tech® waterproof and breathable workwear provides extreme protection in the harshest conditions keeping the body dry and warm. Key Features: Helly Tech® - waterproof/breathable. Allied down 85/15 European goose fill 700+. Taped seams. Detachable hood (faux fur also detaches). Hood with draw cord adjustment at front and adjustment at back. Storm flap with velcro closure. Chin guard and back placket. YKK vislon two-way center front zipper. Chest pocket with flap and velcro closure. Click.on™ loops at chest. Two visible chest pockets with YKK WR zippers. Draw cord adjustment at inside waist. Hand-warmer and cargo pockets. Sleeve pocket with YKK zipper at left sleeve. Inner sleeve cuffs. Piping for reinforcement at bottom sleeve. YKK vislon side zippers for better movement. Zipper on inside lining to permit embroidery. Pocket at right inside with YKK vislon zipper.

**#73347BLK** is black with reflex at sleeves and shoulders.

**#73347YLW** is fluorescent yellow ANSI/ISEA 107 (2010) Reflex at sleeves, shoulders and body, Class 3.

<b>Item #73347BLK(size)</b>	SM-2XL	<b>\$395.00</b>
<b>Item #73347YLW(size)</b>	SM-2XL	<b>\$395.00</b>

Available at additional cost: 3XL-4XL

## Potsdam Class 3 Parka Jacket

Features include a under sleeve zipper for ventilation, 2 chest pockets with zip closure, mobile pocket with pen pocket on right chest. 2 hand pockets with zip closure. Map pocket under storm flap. Elastic cuffs with Velcro® adjustment, storm flap with zip and Velcro® closure. Detachable hood with draw cord adjustment. Extended back with draw cord adjustment at waist and hem. Hood made for hard hat. Click.on™ loops for additional accessories. Meets ANSI Class 3 standards and ASTM F1671 standards for bloodborne pathogen testing.

**Item # 71374YLW(size)**

SM-2XL **\$170.00**

Available at additional cost: 3XL-6XL



## Helly Hansen Class 2 Potsdam Lining Jacket

Helly Tech® performance workwear protects against rain and wind while keeping the body dry and warm. Features include reflective tape, light fleece in collar and chin guard, stormflap with zip and Velcro® closure. Mobile pocket with velcro closure on right chest. 2 hand pockets with zipper and snap closure. Click.on™ loops for additional accessories under flaps. Left inner pocket with Velcro® closure. Rib cuff. Drawcord adjustment at hem. Extended back. Meets ANSI Class 2 Standards.

**Item #73374ORG(size)** XS-2XL **\$125.00**

**Item #73374YLW(size)** XS-2XL **\$125.00**

Available at additional cost: 3XL-6XL



## Potsdam Class E Bib Overalls

Features include detachable suspenders, 2 hand pockets and articulated knees. Bellowed thigh pocket with flap. Has a broad back belt tunnel for extra support and stability, a back pocket with flap, ruler pocket and inside kneepad pocket. Boot zip under flap with Velcro® closure Velcro® adjustment at the bottom hem. Click.on™ loops for additional accessories. Meets ANSI Class E standards and ASTM F1671 standards for bloodborne pathogen testing.

**Item #71475YLW(size)** SM-2XL **\$144.00**

Available at additional cost: 3XL-6XL



## Alta Class 3 Reflective Workwear Jacket

Strong, durable jacket constructed of 85% polyester and 15% cotton. Features a zipper front closure with two pockets in front with flaps. Extended back for added comfort and breathability. Push button adjustment at cuff. Click.on™ loop under front pocket flap for ID card holder. Reflective at waist, sleeves and shoulders for added visibility on jobsites. Meets ANSI/ISEA 107 for Class 3 standards.

**Item #76196YLW(size)**

LG-2XL **\$105.00**

Available at additional cost: 3XL-4XL



**While Supplies Last**

## Alta Class 1 Reflective Workwear Pants

Strong, durable pants constructed of 85% polyester and 15% cotton. Features a zippered fly front with plastic covered metal buttons. Knee pad pockets in reinforced fabric, accessible from the inside. Ruler pocket with an additional pocket for tools. Thigh pocket with flap and Velcro® closure. Two back pockets and two hanging front pockets with double bottom for increased durability. Two pockets at front, belt loops and fold at hem with the option to extend the length by 5 cm. Loops with double Velcro on both sides for hammer holders. Reflective legs.

**Item #76496YLW(size)** LG-2XL **\$110.00**

Available at additional cost: 3XL-4XL

## Helly Hansen Chelsea Jacket

Cordura® Reinforcement fabric constructed of 79% cotton and 21% polyester- 295 g/m². Features include micro fleece inside collar and cuffs, zipper under stormflap in front. 2 chest pockets with flaps. 2 hand pockets with zipper closure. Two inside pockets with Velcro® closure. Velcro® adjustment on sleeves. Reflective piping on elbows, shoulders and back. Padded shoulders. Reinforced fabric on elbows, shoulders and hem. Extension in back for better movement. Reflective HH logo on front.

**Item #76040BLK(size)** **\$88.00**

Unlined Jacket, SM-2XL

**Item #76041BLK(size)** **\$98.00**

Lined Jacket, SM-2XL

Available at additional cost: 3XL-4XL



## Helly Hansen Chelsea Construction Pant

Cordura® reinforcement fabric constructed of 79% cotton and 21% polyester- 295 g/m². Reinforcement is 100% Nylon Cordura® 210 g/m². Features a fly with zip, plastic covered metal buttons, knee pad pockets in Cordura®, accessible from the inside. Knee pad position can be adjusted 5 cm for better fit. Ruler pocket with double bottom in Cordura® and removable button for attaching knives. Extra button included. Thigh pocket with flap for accessories and mobile phone pocket. Two back pockets, one with flap, Velcro® closure and reflex piping. Two hanging front pockets for nails/screws in Cordura®, with angled corners and double bottom, possible to fold into pockets underneath. Polyester loops for screwdrivers and pliers. Two pockets at front. Broad belt tunnel at back for extra strength and stability. Gusset at crotch. Belt loops with Click.on™ function for additional accessories. Loops with double velcro on both sides for hammer holders.

**Item #76488BLK(size)** **\$85.00**

W: 30"-44" L: 30"-34"

## **Bomber II Class 3 Insulated Jacket**

Tingley Bomber II highly visible insulated winter jacket designed to provide warmth, comfort, and safety at an affordable price. Features quilted polyester lining with stitched and taped seams for 100% waterproof protection. Roll-a-way hood in collar for convenience. Overhead shoulder design for complete freedom of movement. Storm fly front and zipper front closure seal out wind and rain. 210 denier polyester shell for great wear. Dark colored front helps conceal dirt. Includes slash front pockets with closure, left breast radio pocket with flap closure and two mic tabs. Elasticated cuffs and waist for comfortable fit. Fluorescent orange or lime color for excellent day time visibility. 2" silver reflective tape reflects light for 360° nighttime conspicuity. ANSI/ISEA 107 Class 3 compliant.



**TINGLEY**  
SAFETY & PROTECTION

**Item #J26112(size)** Lime SM-XL **\$62.45**  
**Item #J26119(size)** Orange SM-XL **\$62.45**  
**Available at additional cost: 2XL-5XL**

## **Icon™ Lined Jacket**

The Icon™ Premium ANSI Class 3 compliant lined jacket is engineered to provide superior comfort and safety in the toughest work environments. Waterproof, breathable fluorescent yellow-green fabric for all season comfort and excellent daytime visibility. 2" silver reflective tape reflects light for 360° nighttime conspicuity. Stitched/ taped sealed seams and zipper/ storm fly front with throat guard provide protection from wind and rain. Mesh/ taffeta lining and a full-vented cape back for comfort and improved air circulation. Features a D-ring access for fall protection harnesses, hand warmer side pockets, radio front pocket and inner breast pocket with zipper closure. Jackets feature elastic cuffs with hook and loop take-up straps on sleeves, attached hood, insulating black fleece liner and elastic drawcord on jacket for added protection.

**TINGLEY**  
SAFETY & PROTECTION



**Item #J24172(size)** Lime SM-XL **\$103.85**  
**Available at additional cost: 2XL-5XL**

## **All Season Insulated Fleece Jacket**

Tingley all season heavy weight insulated fleece jacket can be worn alone for general purposes or used as a zip-in liner with 3 attachment points for use with the Tingley Icon3.1 jacket (J24172). Breathable, 300 gram insulating black fleece jacket has complete freedom of movement. This heavy-weight fleece jacket has 2 slash side pockets with zipper closures and an adjustable elastic waist draw-cord. Also a double lined storm fly front throat guard designed to seal out wind and rain.

**TINGLEY**  
SAFETY & PROTECTION



**Item #J72003(size)** Black SM-XL **\$52.05**  
**Available at additional cost: 2XL-5XL**

## **Tingley Icon™ Premium Rainwear**

The Icon™ premium rainwear is engineered to provide superior comfort and safety in the toughest work environments. Waterproof, breathable fluorescent orange or lime fabric for all season comfort and excellent daytime visibility. 2" silver reflective tape reflects light for 360° nighttime conspicuity.

**TINGLEY**  
SAFETY & PROTECTION

#J24122



#J24129

## **Fluorescent Jackets**

ANSI/ISEA 107 Class 3 compliant. Stitched, taped sealed seams and zipper, storm fly front with throat guard provides protection from wind and rain. Mesh, taffeta lining and a full-vented cape back for comfort and improved air circulation. Features a D-ring access for fall protection harnesses, hand warmer side pockets, with front cargo pockets, radio front pocket and inner breast pocket with zipper closure. Jackets feature elastic cuffs with hook and loop take-up straps on sleeves, attached hood, inner attachment system for Phase 3™ jacket and elastic drawcord on jacket for added protection. Breathable to ASTM E96.



**Item #J24129(size)** SM-XL **\$70.35**

**Item #J24122(size)** SM-XL **\$70.35**

**Available at additional cost: 2XL-5XL**

## **Fluorescent Overalls**

ANSI/ISEA 107 Class E compliant. Stitched and taped sealed seams provide protection from wind and rain. Overalls feature heavy duty suspenders, snap fly front, take-up snaps on waist and hook and take-up straps on leg cuffs.

**Item #O24129(size)** Orange SM-XL **\$40.10**

**Item #O24122(size)** Lime SM-XL **\$40.10**

**Available at additional cost: 2XL- 5XL**

## **GloWear® Class 2 Reversible Wind Jacket**

Ergodyne GloWear® Class 2 reversible wind jacket with removable sleeves. Lightweight style with a poly pongee shell provides excellent wind resistance. Features multiple pockets with durable YKK® #5 zippers. Can be reversed from black/ lime to Class 2 lime vest with 3M™ ComfortTrim™ reflective material meets ANSI Class 2 standards.



**Item #8350(size)** SM-XL **\$95.05**

**Available at additional cost: 2XL-5XL sizes**

## Radians® Class 3 Waterproof Parka w/ D-Ring Pass Thru



- PU coated oxford polyester weather proof shell
- Removable inner fleece jacket with lined sleeves
- 2" Silver reflective material tape
- Four lower pockets with zipper
- Wrist cuffs with closure
- Gusseted cell phone/radio chest pocket
- Concealed attached hood
- Hidden inside side pocket
- Two large inside pockets
- Dual mic tabs
- D-ring pass through in back of jacket
- Meets ANSI Class 3 standards



**Item #SJ410BYLW(size)** MD-2XL  
Available at additional cost: 3XL-5XL

**\$88.75**

## 3-Layer Reflective Jacket



Radians® Class 3 reflective wear featuring a three-in-one system. Wind and water resistant shell and removable inner fleece jacket. 2" silver reflective tape. Mic tabs on both shoulders, concealed hood. Wrist cuffs with closures, four lower pockets with zipper. Hidden inside pocket, two large inside pockets, cell phone/radio chest pocket.



**While Supplies Last**

**Item #SJ413ZG(size)** MD-2XL  
Available at additional cost: 3XL-5XL

**\$75.00**

## Class 3 Long Sleeve Hooded Sweatshirt



Made with 320gsm fleece material, the hood is lined with double birds eye mesh to maximize airflow and quickly dry moisture. 2 inch reflective tape. Full front zipper closure, adjustable pull cords attached to the hood, black elastic knit wristband and cuffs, and two lower pouch pockets.



**Item #SJ01G(size)** Grn/Ylw MD-5XL **\$34.50**

**Item #SJ010(size)** Orange MD-5XL **\$34.50**

Available at additional cost: 3XL-5XL

## Radians® Class 3 Quilted Multi-Color Bomber Jacket



- 2" Silver reflective material tape
- Dual mic tabs
- Upper front- gusseted flap covered radio pocket
- 2 zipper closure lined pockets in lower front
- Inside- 1 open chest pocket
- Clear, chest badge holder
- 300 Denier multi-color PU coated oxford polyester weather proof shell
- Concealed detachable hood
- Elastic knit waistband and wrist cuffs
- Meets ANSI Class 3 standards



**Item #SJ12(size)** MD-2XL  
Available at additional cost: 3XL-5XL

**\$67.50**

## Radians® Class 3 Deluxe Three-In-One Bomber Jacket



- Zip out removable fleece jacket with lined sleeves
- PU coated oxford polyester weather proof shell
- Concealed attached hood
- Dual mic tabs
- Elastic oxford waistband
- Elastic oxford wrist cuffs with closure
- 2" Silver reflective material tape
- Covered fleece lined slash pockets
- Gusseted cell phone/radio chest pocket with clear ID pocket
- Two left sleeve pencil pockets
- Meets ANSI Class 3 standards



**Item #SJ210BYLW(size)** MD-2XL YLW **\$64.50**

**Item #SJ210BORG(size)** MD-2XL ORG **\$64.50**

Available at additional cost: 3XL-5XL

## Class 3 Hooded Sweatshirt, Full Zip



High quality, soft 9 ounce sweatshirt material. Features a full front zipper front closure and lower outside slash pockets. Black lower body and sleeves help the wearer keep a clean appearance. Black rib knit cuffing for a secure, comfortable fit. Hood provides added neck and head protection. Two inch wide reflective stripes across arms, shoulders and front midsection. Great visibility when working on jobsites. Excellent hoodie to wear in cold weather. Meets ANSI/ISEA 107 Class 3 standards. Full zip, Hi-Viz, Lime.



**Item #JS102(size)** MD-5XL **\$41.65**

## PVC Polyester Raincoat



West Chester 35mm PVC polyester raincoat. This rain coat is perfect for light to medium-duty applications. PVC over polyester construction featuring a vented cape back with storm flap for wide range of motion. Two outside pockets with flaps help to protect valuables. Snap front closures with storm flap to keep the elements out. Corduroy collar for added comfort. Detachable hood. 48 inch length. 24 per case.



**Item #200C(size)** SM-XL **\$15.10/EA**

Available at additional cost: 2XL-5XL



## Luminator™ Class 3 Rain Coat

Features 0.35mm PVC/polyester construction. Meets ANSI 107-2004 Class 3 standard. 49 inches long. Black plastic snap storm fly front. Black plastic take up snaps at the wrists detachable drawstring hood. Rounded collar of same material. Cape ventilated back with 2 mesh holes. 2 patch pockets of same material with flap with black plastic snaps. Raglan sleeves. Underarm air vents. 2 inch 3M™ silver strip applied on each arm 5 inches from cuff. 1/4 inch 3M™ lime strips applied around the body of the coat. 20 per case.

### Item #201CL3(size)

SM-XL **\$61.75/EA**

Available at additional cost: 2XL-4XL



## Luminator™ Reflective Rain Coat

Features 0.35mm PVC/polyester construction. 49 inches long. Black plastic snap storm fly front. Black plastic take up snaps at the wrists. Detachable drawstring hood. Rounded collar of same material. Cape ventilated back with 2 mesh holes. 2 patch pockets of same material with flap with black plastic snaps. Raglan sleeves. Underarm air vents. 2 inch 3M™ yellow/silver strip applied on each arm 5 inches from cuff. 2 inch 3M™ yellow/silver strips applied around the body of the coat. 20 per case.

### Item #201CR(size)

MD-XL

**\$38.55/EA**

Available at additional cost: 2XL-4XL



## DuraScrim™ PVC Flame Resistant Rain Suit

This DuraScrim™ double coated PVC on polyester suit offers durability at an economical price. The extremely high tear strength is the result of an open weave polyester scrim fabric being sandwiched between two layers of flame resistant PVC coating. The Thermo-Rad sealed seam construction is great for chemical splash and waterproof protection. Thicker outside coating for better abrasion resistance, with a lighter interior coating to protect fabric from chemical contamination. Flame resistant tested. Self extinguishing with flameout and afterglow less than two seconds after removal of ignition source and char length less than 6". ASTM D6413 test method.

### Item #J56107(size)

Jacket w/ Hood

SM-XL **\$12.75/EA**

### Item #J56207(size)

Jacket

SM-XL **\$11.75/EA**

### Item #056007(size)

Overalls

SM-XL **\$10.50/EA**

Available at additional cost: 2XL-3XL



# Jackson Safety\*

## Class 3 Bomber Jacket V

Meets ANSI/ISEA Z107-2004 Class 3 standard. Class 2 without sleeves. Double-sided insulation. Zips into the All-Weather Jacket. Welded seams throughout with 360 degree visibility of beaded silver reflective tape. Waterproof polyester with PU coating.

While  
Supplies  
Last



### Item #18517LG

Orange

Large

**\$65.00**

### Item #18523XL

Orange

Extra Large

**\$65.00**

### Item #18558XXL

Orange

2X-Large

**\$69.00**

### Item #18559XXXL

Orange

3X-Large

**\$69.00**

### Item #18560LG

Lime

Large

**\$65.00**

### Item #18561XXL

Lime

2X-Large

**\$69.00**

### Item #18562XXXL

Lime

3X-Large

**\$69.00**

## Hi-Viz Rain Gear

### Rain Jackets

Polyester outer shell provides a waterproof and tear resistant outer shell. Flip over snap closure and one inside pocket. Underarm stow away hood inside collar. Snap closure on sleeve. Welded seams throughout with 360 degree visibility of beaded silver reflective tape. Machine washable. Rain pants sold separately.

While  
Supplies  
Last



### Jackets

### Item #20302LG

Large

**\$42.00**

### Item #20303XL

Extra Large

**\$42.00**

### Item #20304XXL

2X-Large

**\$42.00**

### Item #20305XXXL

3X-Large

**\$42.00**

## Hi-Viz All Weather Gear

### All-Weather Jacket

ANSI Class 3 convertible parka may be zippered in or out of the hood with drawstring collar. Insulated patch pockets. Welded seams throughout with 360 degrees of beaded silver reflective tape. Fleece lining. Two exterior pockets with storm flaps. Meets ISEA Z107-2004 Class 3 standards. Machine washable.

While  
Supplies  
Last



### Jackets

### Item #18419XL

Extra Large

**\$55.00**

### Item #18515XXL

2X-Large

**\$58.00**

### Item #18516XXXL

3X-Large

**\$61.00**

### All-Weather Pants

Waterproof polyester with PU coating. 360 degree visibility of beaded silver reflective tape. Snap closure. Belted waist with drawstring. Bottom side zipper for ventilation. Machine washable.

## Hi-Viz Safety Apparel

### With Removable Sleeves

Class 3 with sleeves and converts to meet ANSI/ISEA Z107-2004. Full length zipper travels all the way up the extended collar for full System Jacket for additional warmth and versatile style. 360 degrees of beaded silver reflective tape. Machine washable. Fleece Lining. Two side pockets with zippers.

#### Features:

- Class 3 Hi-Viz winter coat
- Detachable sleeves
- Waterproof material
- Meets ANSI 107-2004 standard
- Hi-Viz Orange or Lime

**JACKSON**



**Sleeves Detach!**

breathable system. Features two outside front pockets with underarm vents for added circulation and cooling. Convenient sleeve cuff closes the space around the hands. Welded beaded silver reflective tape. Meets ANSI/ISEA Z107-2004. Pants ordered separately.

des a waterproof and breathable system. Features two flip over snap closure. Welded seams throughout with 360 silver reflective tape. Meets ANSI/ISEA 2107-2004 Class 3 combined with Class 2 or Class 3 work jackets (sold separately).

#### Pants

<b>Item #20311LG</b>	Large	<b>\$22.55</b>
<b>Item #20312XL</b>	Extra Large	<b>\$22.55</b>
<b>Item #20313XXL</b>	2X-Large	<b>\$22.55</b>
<b>Item #20314XXXL</b>	3X-Large	<b>\$22.55</b>

side for additional protection and warmth. Features a snap-closure with flaps. Elastic cuffs with adjustable closure. Welded silver reflective tape. Waterproof polyester with PU coating. Storm flap that snap shut and one internal chest pocket. Meets ANSI/ISEA Z107-2004. All weather pants sold separately.

coating. Welded seams throughout with 360 degrees of silver reflective tape. Two exterior side pockets and one back pocket that has a quick release clip and a zipper fly. Fleece lined storm flap coverage over boots. Meets ANSI/ISEA Z107-2004 Class 3 combined with Class 2 or Class 3 work jacket, (sold separately).

#### Pants

<b>Item #18602LG</b>	Large	<b>\$35.00</b>
<b>Item #18422XL</b>	Extra Large	<b>\$35.00</b>
<b>Item #18603XXL</b>	2X-Large	<b>\$38.00</b>
<b>Item #18604XXXL</b>	3X-Large	<b>\$41.00</b>



## Ergodyne CORE Performance Work Wear® Outer Layers



### Thermal Vest

Rugged 300D Nylon outer shell with soft, warm fleece lining. Features durable YKK® zippers and drawstring waist. Several pockets, including back document and front cell. Reflective accents help keep workers safe and seen. Thermal weight outer layer work wear vest.



**Item #6463(size)** SM-XL **\$93.50**  
Available at additional cost: 2XL-3XL

### Thermal Bib

Rugged 500D Nylon outer shell provides protection from the elements – wind, repelling water, and keeping cold out. Features non-slip, elastic adjustable straps with durable full length YKK® zippers on each leg for easy on and off. Straight leg design with inside elastic bottom, snap closure. Removable PE foam knee and shin pads. Several pockets including hip and chest. Reflective accents help keep workers safe and seen. Outer layer, thermal weight bib overall.



**Item #6470(size)** MD-XL **\$134.65**  
Available at additional cost: 2XL-3XL

### Thermal Jacket

Ergodyne CORE Performance Work Wear® Outer Layer Jacket. Rugged 300 denier polyester shell with PU and UV treatments. Soft, warm fleece lining. Water repellent coatings and lining help keep wind and rain out. Armortex™ reinforcement zones in heavy wear areas allows for great range of motion. Features durable YKK® zipper with storm flap front. Several pockets, including back document and front cell pockets. Drawstring waist and adjustable cuffs for a secure comfortable fit. Reflective accents help keep workers safe and seen. Thermal weight outer layer work wear jacket.



**Item #4110(size)** **\$129.20**  
2SM (Small), 3MD (Med), 4LG (Large), 5XL (X-Large)  
Avail. at additional cost: 6XXL (2X-Large) & 7XXXL (3X-Large)

## N-Ferno® Extreme Balaclava Removable Face Mask

High performance cold weather mask to combat the damaging effects of cold air. Two-piece, 320g fleece design providing excellent coverage for face, neck and head. Built in Hot Rox™ heat exchange provides warm air for inhalation in even the most extreme conditions. Form fitting design prevents eyewear from fogging. Adjustable mask featuring hook and loop attachments. Completely removable. One size fits most.



**Item #6970ERG** **\$41.70**

## Heavy Duty Insulated Waterproof Gloves

These gloves have a durable genuine goat grain leather palm. This genuine leather provides the protection that all industry professionals and do it yourself (DIY) professionals prefer. Other features include: Rhino Tex™ breathable liner, Heatrac® insulated for ultimate warmth and comfort, and the Neoprene cuff with Velcro® closure allows for a secure and comfortable fit. The padded G Grip™ patches on the palm and finger tips allow for excellent dexterity. Black and red with DiVal logo.

**Item #2990LOGO(size)** LG-2XL

**DiVAL**  
Safety & Supplies for Life



**\$24.60**

## Insulated Waterproof Gauntlet Cuff Gloves

Ergodyne ProFlex® insulated waterproof work gloves. Designed with OutDry® technology providing excellent protection in extreme weather conditions. Features 40g 3M™ Thinsulate™ insulation for added comfort and warmth. 500D nylon back with PVC-reinforced palm, fingers and saddle. Gathered elastic mist and gauntlet cuff. Pull tab for easy on, off. EVA knuckle pad with reflective dots. Terry thumb brow wipe. Water and wind proof.

**Item #1647(size)** Size 2-6 (SM-XXL)

**ergodyne**  
WORK GEAR



**\$53.65**

## Heavy Duty Insulated Waterproof Gloves

These gloves are windproof and feature a pliable yet durable reverse goat skin grain leather that dries soft. It's Heatrac® insulation, extended glove length, and knit cuff allow for ultimate warmth and comfort in harsh weather conditions. The G-Grip™ patches on the palm and fingertips offer excellent dexterity. Waterproof. Lightweight. Stitched with DiVal logo.

**Item #1962LOGO(size)** LG-2XL

**DiVAL**  
Safety & Supplies for Life



**\$20.75**

## Insulated Waterproof Elastic Cuff Gloves

Designed with water and wind proof, breathable insert liner. Features 40g 3M™ Thinsulate™ insulation for added comfort and warmth. Double reinforced synthetic leather palm. Padded spandex back and neoprene knuckle pad. Terry thumb brow wipe. Low-profile closure with woven elastic cuff for secure fit. Thermal utility style gloves with excellent dexterity and warmth.

**Item #1603(size)** Size 2-6 (SM-XXL)

**ergodyne**  
WORK GEAR



**\$35.65**

## Insulated Full Dip Microfoam Nitrile Gloves

Provides excellent abrasion resistance and features a foam nitrile coating with micro capillaries that channels oil from the surface of the glove. Touch screen material is embedded in the coating, allowing for use of all fingertips. Brushed loop out terry liner keeps hands warm in cold temperatures. Water and cold resistant. Insulated. Knit wrist cuff. Machine washable. Navy blue.

**Item #715WNFTFT(size)** SM-2XL

**WESTCHESTER**  
PROTECTIVE GEAR



**\$8.70/PR**

## PosiGrip® PU Palm Coated Gloves w/ Touch Screen Fingertips

Features a high-visibility nylon shell with gray polyurethane (PU) palm coating for enhanced tactile sensitivity and a high level of dexterity. Conductive threads in fingertips are great for use with touch screen devices. Knit wrist cuff for a secure, comfortable fit. Machine washable. 72 pairs per case.

**Item #HVV713SUTS** XSM - 2XL

**WESTCHESTER**  
PROTECTIVE GEAR



**\$3.10/PR**

## Silver Series™ Hi-Viz Thermal Lined Gloves

The Radians® Radwear™ RWG800 Silver Series™ is a hi-visibility thermal lined glove with Reflectivz™ technology. The wind and water resistant shell provides a comfortable fit in harsh environments, and the Reflectivz™ waterproof plated palm provides a slip free grip in all weather conditions. Sizes MD-XL.

**Item #RWG800(size)** **\$12.50**



**RADIANS**

**GRABBER**  
warmers

## Hand Warmers

The Grabber 7+ Hour Hand Warmers are a standard cold weather solution for anyone working or playing out in the cold. Simply open the package and place in an enclosed glove, muff or pocket. The warmer will begin activating as soon as it is exposed to the air. The Grabber Mega Warmer is great for pockets, in a Grabber Sleeping Bag Pouch, or as refills for any Grabber Cozy Muff. The Mega Warmer is the perfect cold weather solution, providing hours of long lasting heat. Both designed for one-time, disposable usage.

**Item #173967** 7 hours **\$1.15/PR**

**Item #MWES** 12 hours **\$1.30/EA**



## Hot Rods® Hand Warmers

Instantly warms in minutes after opening and will stay warm for up to 8 hours. Designed to fit comfortably in gloves and mittens offering superior protection for long hours in cold temperatures. Safe, disposable, odorless and non-toxic.

**Item #110010R** **\$1.05/PR**



**CCCU NOMIX**

## GGT5® HexArmor Mud Grip® 4021x Gloves

Made with SuperFabric® brand material, providing you with the highest cut resistance on the market. Other features include puncture protection, enhanced impact protection and a special HexArmor Mud Grip®. This glove exceeds ISEA and CE level 5 cut resistance in noted areas and provides puncture protection from wickers, burrs, and cable wire. A HexArmor Mud Grip® synthetic leather palm and thumb area with PVC dots work well with light to medium oil based muds, giving you a sure grip in hazardous environments. Machine washable.

**Item #4021(size) SM-XL \$44.30**



## Tuff-Coat® Acrylic Hi-Viz Winter Gloves

Hi-Viz acrylic liner is brushed inside to help keep hands warm during cold temperature applications. Fluorescent yellow color improves safety in low light conditions. Textured natural rubber coating provides a good grip and stays flexible even in cold temperatures. Contains natural rubber. ANSI Cut Level 2 protection.

**Item #400(size) SM-2XL \$3.50**



## Polar Alaskan Seamless Waterproof Insulated Gloves

This seamless waterproof glove has a PVC textured shell and a removable, washable liner. Basic chemical proof, used for window washing.

**Item #174483 \$31.00**



## SHOWA® 4545 Insulated Foam Nitrile Coated Gloves

SHOWA® 4545 glove combines a durable and extended 3/4 over the knuckle foam nitrile coating with an acrylic fleece liner to keep the hand comfortably warm. Comfort, lasting warmth and wet/dry gripping power are unmatched with this multi-feature glove. 15 gauge seamless nylon knit glove for high dexterity and Zorb-IT® lite oil absorbency palm coating for oily grip. The nitrile coating will not stiffen and retains maximum flexibility in temperatures down to -15°F. Warm 7 gauge brushed inner acrylic fleece liner for cold applications. This fully launderable glove also comes with a color coded cuff, making sorting easy after washing. Ideal for applications in de-icing, outdoor work, airport maintenance, aircraft assembly, construction, transportation, cold storage, snow removal, highway work, forestry and agriculture. Certified to ANSI/ISEA 105-2005 standards for Cut Level 3 protection.

**Item #4545(size) MD-2XL**

**\$7.25**



## Ninja® Ice Double Layer Work Glove

PVC foam sponge on black nylon shell. These gloves are layered with 7 gauge acrylic terry liner on the inside and a 15 gauge nylon liner. It has a HPT coating on the outside that repels liquids while still providing a firm wet or dry grip. The coating remains soft and flexible in temperature as low as -50°C/-58°F. Treated in Actifresh to kill bacteria and promote freshness. Great to use in cold storage, construction, and utilities and outdoor winter use.

<b>Item #N9690(size)</b>	Palm Coat	SM-2XL	<b>\$7.85</b>
<b>Item #N9690FC(size)</b>	Full Coat	MD-2XL	<b>\$8.35</b>
<b>Item #N9690HVL(size)</b>	Hi-Viz	MD-2XL	<b>\$8.10</b>



## SHOWA® ATLAS® 451 Coated Insulated Gloves

These cold weather gloves combine a mixture of acrylic loop-in Terry cotton liner for warmth, lightweight feel and suppleness. Natural rubber palm and fingertip coating protects the hand from abrasion, cutting and puncturing and tearing. Rough textured grip allows for excellent gripping abilities for slippery objects. Ideal for use in cold rooms or outside cold weather conditions. Completely launderable. Gray.

**Item #451(size) \$3.60**  
Size SM-XL



## Northflex Cold Grip™ Winter Gloves

These Northflex Cold Grip™ gloves are the latest generation of winter gloves provide high levels of comfort, fit, and dexterity. The seamless brushed synthetic liner is comfortable and provides insulation from cold. Features include a PVC coating which extends to knuckles to provide liquid protection. The foamed coating also provides excellent dry and wet grip. Retains flexibility, even at low temperatures. Launderable.

**Item #NF11HD(size#) \$9.00**  
Size 8-11 (MD-XXL)





## Top Grain Cowhide Thermal Driver Gloves

Top grain cowhide driver gloves with thermal lining designed to keep hands warm and reduce insulation thickness for improved dexterity. 12 pair per pack. 10 packs per case.



**Item #1JL6133(size)** SM-XL **\$7.30/PR**



## Cowhide Leather Palm Work Gloves, Pile Lined, Safety Cuff

These cowhide leather gloves provide good dexterity, durability, and flexibility. They feature a striped canvas back and leather fingertips and knuckle strap for extra protection. Soft, pile lining keeps hands warm and comfortable when working in colder environments. Rubberized safety cuff protects your wrist and ensures quick glove removal. Wing thumb. Sold by the pair. 72 pair per case.



**Item #5558P** Large **\$4.95/PR**

**Item #5558PXL** Extra Large **\$4.95/PR**

## West Chester Leather Palm Thinsulated™ Gloves



West Chester leather palm Thinsulate™ insulated gloves contain grain cowhide leather palm with 100 gram Thinsulate™ lining. Features include rubberized safety cuff that protects the lower arm and wrist. Grain cowhide fingertips and knuckle strap. Durable, economical grain cowhide leather. Works great for farming, construction, landscaping.



**Item #5555(size)** SM-XL **\$6.55**

## Side Split Cowhide Leather Freezer Gloves



Durable, reliable gloves that offer exceptional hand protection in cold weather environments and applications. 100 gram 3M™ Thinsulate™ lining offers high level of warmth without adding bulk. Reinforced leather palm. Wing thumb. Knit wrist for secure comfortable fit. Insulated freezer gloves. Extra Large.



**Item #1640XL** **\$13.25**

**#9940KF**



**#9940KT**



## Pigskin Leather Driver Gloves

Premium grain pigskin withstands moisture without stiffening. Keystone thumb reduces hand fatigue and shirred elastic back keeps glove snug. #9940KT gloves have 3M™ Thinsulate™ lining fibers that are designed to trap and reflect back body heat. 12 pair per pack. 10 packs per case.

**Item #9940KF(size)** SM-2XL

**\$8.25/PR**

**Item #9940KT(size)** SM-2XL

**\$9.30/PR**



**#1543T**

**#1542T**



## Deerskin Driver Style Gloves

Premium deerskin has high tensile strength with good insulation properties. 3M™ Thinsulate™ lining along with double shirred wrist help retain warmth. Gunn cut, keystone thumb, and self hemmed. 12 pair per bag. 6 bags per case.

**Item #1542T(size)** Deerskin, SM-XL **\$18.35/PR**

**Item #1543T(size)** Deerskin Suede, MD-2XL **\$15.40/PR**

## Endura® Kevlar® Lined Waterstop™ OilBloc™ Goatskin Leather Driver Gloves

These soft yet very durable goatskin leather gloves provide excellent flexibility along with very good dexterity. Their high lanolin content makes the leather soft while offering excellent abrasion and puncture resistance. These gloves are processed with Superior's own OilBloc™ treatment for exceptional water and oil repellency. This winter style leather glove features a 100-gram Thinsulate™ lining for greater warmth without bulk. A set-in Keystone thumb for greater comfort, reinforced with extra stitching. Elasticized back for a snug fit. Meets NFPA standards for HRC Level 2 protection. Arc rating ATPV equals 21 cal/cm². Cut resistant Kevlar® lining meets ASTM standards for Cut Level 2 protection. Sold by the pair. 60 pairs per case.



**Item #378GOBTKL(size)** SM-2XL

**\$23.95**

Available at additional cost: 3XL

## Kinco® Suede Pigskin Thermal Gloves

Kinco® suede pigskin leather palm with fabric back material. Pigskin dries soft after getting wet. Fully lined with Heatkeep® thermal lining. Polyester knit wrist option for the colder days and safety cuff option for the less cold days.



**Item #1926(size)** LG-XL **\$9.90**  
**Item #1926KW(size)** LG-XL **\$9.95**

## Kinco® Original Pigskin Thermal Gloves

The original pigskin leather palm work glove! Premium grade grain pigskin leather palm with heavy weight stripe fabric back. Pigskin dries soft after getting wet and has great abrasion! Fully lined Heatkeep® thermal lining. Polyester knit wrist (#1927KW) for colder day or safety cuff (#1927) options are available.



**Item #1927(size)** SM-2XL **\$10.95**  
**Item #1927KW(size)** SM-2XL **\$11.45**

## Kinco® Grain Pigskin Thermal Gloves

Premium grade grain leather palm and suede pigskin leather back. Pigskin leather dries soft again after getting wet. Full lined with Heatkeep® thermal lining. Polyester knit wrist can either tuck under your jacket for extra warmth or invert it back into the glove for warmer days.



**Item #94HK(size)** SM-XL **\$13.65**

## West Chester Thinsulate™ Pigskin Gloves

West Chester premium grain pig-leather palm gloves with high-visibility safety, orange back. Reflective tape meets ANSI/ISEA 107-1999 Level 2. 100 gram 3M™ Thinsulate™ lining provides excellent protection when working in colder conditions. Reflective material across cuff and knuckle provides excellent visibility in darkness and low-light conditions. Rubberized 2-1/2 inch knit wrist cuff.



**Item #HVO5555(size)** MD-XL **\$6.55**  
**Item #HVO1555(size)** MD-XL **\$6.75**

## Kinco® High Visibility Thermal Safety Gloves

Premium grade grain pigskin leather palm with high visibility fabric back. Fully lined Heatkeep® thermal lining. Pigskin dries soft after getting wet and has great abrasion! 3M™ Scotchlite™ reflective knuckle strap material for great visibility. Options of safety orange or green fabric back in both polyester knit wrist of safety cuff design. Waterproof option available.



Item #	Color	Cuff Style	Waterproof	Sizes	
<b>1938(size)</b>	Orange	Safety Cuff	No	SM-XL	<b>\$13.30</b>
<b>1938KW(size)</b>	Orange	Knit Wrist	No	SM-XL	<b>\$13.50</b>
<b>1938KWP(size)</b>	Orange	Knit Wrist	Yes	SM-XL	<b>\$14.10</b>
<b>1939(size)</b>	Green	Safety Cuff	No	SM-XL	<b>\$12.80</b>
<b>1939KW(size)</b>	Green	Knit Wrist	No	SM-XL	<b>\$13.05</b>
<b>1939KWP(size)</b>	Green	Knit Wrist	Yes	SM-XL	<b>\$13.50</b>

## Insulated Premium Grain Pigskin Leather Palm Hi-Viz Gloves

Reflective material across cuff and knuckle provides excellent visibility in darkness and low-light conditions. Rubberized safety cuff. Fluorescent yellow polyester back. Reflective tape meets ANSI/ISEA 107-1999 Level 2. 3/4" reflective stripe on a 2.2 green band on cuff, 3/4" reflective stripe on 1 1/2" green band on the back, safety cuff, wing thumb. Great for working in winter weather conditions. Sold by the pair. 72 pairs per case.



**Item #HVY5555** Safety Cuff SM - 2XL **\$10.20**

## Insulated Premium Grain Pigskin Leather Palm Hi-Viz Gloves

Premium grain pigskin leather palm glove with safety yellow back and reflective material. Reflective silver fabric trim across knuckles provides excellent visibility in darkness and low-light conditions. Knit wrist helps keep unwanted dirt and debris out of glove. 3M™ Thinsulate™ lined, reflective tape meets ANSI/ISEA 107-1999 Level 2. 3/4" reflective stripe knuckle protection with knit wrist. Fluorescent orange polyester back. Great for working in winter weather conditions. Sold by the pair. 72 pairs per case.



**Item #HVY1555** Knit Wrist SM - 2XL **\$10.80**



## **Insulated PVC Coated Work Gloves**

Fluorescent orange foam insulated PVC gloves. PVC is resistant to abrasions, oils, acids, and caustics. Dipped glove provides liquid protection and foam insulation provides warmth. Dexterity is maintained, even in freezing weather.

<b>Item #1007OR</b>	Knit Wrist	<b>\$4.10</b>
<b>Item #1017OR</b>	Safety Cuff	<b>\$4.70</b>
<b>Item #1027OR</b>	12" Straight Cuff	<b>\$6.55</b>

## **SHOWA® ATLAS® Tem-Res 282 Insulated PU Coated Glove, Liquid Proof**

For the first time warmth, breathability, and flexibility have all been combined into a liquid-proof glove. Using state-of-the-art technology, SHOWA® ATLAS® Tem-Res 282 provides the wearer with protection from liquids in cold conditions while still allowing them the comfort of a breathable glove. The abrasion-resistant polyurethane coating and insulated acrylic liner were specially designed by engineers to retain warmth while reducing perspiration. The thin, yet durable coating maximizes comfort and flexibility in very cold environments. Nitrile was added to the fingertips to increase protection. Launder at 40°C (104°F) using a neutral detergent. Meets ASTM standards for Cut Level 2 protection.

<b>Item #282(size)</b>	MD-2XL	<b>\$16.50/PR</b>
------------------------	--------	-------------------



## **SHOWA® ATLAS® 460 PVC Coated Insulated Gloves**

Durable double-dipped medium weight PVC gloves. Strong, yet maintain suppleness even down to -20°F. Features a soft warm seamless yellow cotton acrylic insulated liner. Rough textured coating ensures grip and increases the gloves abrasion resistance and durability. Oil and chemical resistant. 11.8" length. Liquid proof.



<b>Item #460(size)</b>	SM-XL	<b>\$15.40</b>
------------------------	-------	----------------



## **Monkey Grip® Heavy Duty Vinyl Coated Thermal Gloves**

Features a tough PVC vinyl coating protects hands from abrasion and stays soft even when cold. Foam insulation keeps hands warm and dry. Curved fingers, wing thumb and soft jersey lining offer superior comfort. Great for any winter application where a high visibility glove is required. Fluorescent orange vinyl fully coated work gloves. ANSI Cut Level 2 protection. 12" length.

<b>Item #23173</b>	LG, Safety Cuff, Raised Finish	<b>\$9.75</b>
<b>Item #23191</b>	LG, Knit Wrist, Smooth Finish	<b>\$8.60</b>
<b>Item #23193</b>	XL, Safety Cuff, Smooth Finish	<b>\$11.35</b>



## **SHOWA® 477 Foam Grip Insulated Gloves**

SHOWA® 477 fully dipped insulated nitrile coated work gloves. Provide comfort and touch sensitivity. Superior foam overdip ensures excellent grip even in oily applications. Easy donning and doffing while keeping the hands warm in sub-zero temperatures. Ergonomic design reduces hand fatigue. Knit wrist cuff for a secure, comfortable fit. Completely launderable. Available in sizes MD-XXL.

<b>Item #477(size)</b>	<b>\$13.95/PR</b>
------------------------	-------------------



## **Double Layer Neoprene Gloves**

Heavy weight, multi-purpose, double layer glove with thermal insulation. These gloves offer great chemical resistance, and are made to resist degradation and protect against cuts. With the double knit cotton liner, these gloves can withstand temperatures of -100° F to 480° F. Excellent non-slip grip. Neoprene. Heavy weight. 14" length. Available in sizes 8-10.

<b>Item #NL56(size#)</b>	<b>\$26.00/PR</b>
--------------------------	-------------------



**While Supplies Last**

## **Triple Dipped PVC Gloves**

These heavyweight PVC gloves are strong, yet extremely soft and flexible even in cold temperatures. They feature a soft warm comfortable seamless yellow acrylic lining, with a rough textured coating that ensures grip and increases the gloves abrasion resistance and durability. Oil and chemical resistant. Insulated, triple dipped PVC glove. 12". Blue. Available in sizes LG-XL.

<b>Item #490(size)</b>	<b>\$8.90/PR</b>
------------------------	------------------

## Therm-A-Knit® Insulator Glove

**Ansell**

Thermolite® fabric delivers warmth against cold or damp conditions, even when wet. Fast-wicking fibers act as hand warmers. Machine washable. Offers usability as a liner under gloves. 12 pair per pack. Available in white or blue.



**Item #THERM** White **\$3.40/PR**  
**Item #THERMBL** Blue **\$3.60/PR**

## Thermostat® Thermal Glove Liner

**DiVal**  
Safety & Supplies for Life

These lightweight, 13 gauge glove liners feature a machine knit shell with Thermostat® hollow-core polyester fibers. The Thermax material provides superior warmth and insulation. Integrated knit wrist allows for a secure and comfortable snug fit. These gloves offer usability as a liner under other glove styles. Machine washable. Universal size fits most. 12 pair per bag.



**Item #FBC3730** **\$2.85/PR**

## Knit Glove Liner

Heavy-duty seamless knit cotton, polyester glove liners. Knit construction allows for excellent breathability with less hand fatigue and added comfort. Great for wearing under electrical insulating glove. 7 gauge. 4" cuff.



**DiVal**  
Safety & Supplies for Life

**Item #145149** **\$1.90/PR**

## 100% Knit Cotton Glove Liner

Lightweight white string knit 7-cut 100% cotton glove. Provides a cool and comfortable layer of protection. 12 pairs per bag. 40 bags per case.



**WESTCHESTER**  
PROTECTIVE GEAR

**Item #708SC** **\$0.75/PR**

## Lightweight String Knit Gloves

Lightweight white string knit 7-cut polyester/ cotton gloves are a cool and comfortable layer of protection ideal for use as a glove liner, providing insulation in cold weather. Affordable gloves features a color-coded hem and overcast edging. This glove is ideal for manufacturing, general labor, material handling, shipping/receiving and agriculture. 12 pair per bag. 40 bags per case.



**WESTCHESTER**  
PROTECTIVE GEAR

**Item #104L** **\$0.50/PR**

## Seamless Knit Gloves

**Honeywell**

Standard weight cotton/polyester blend knit glove. 4" extended thermal knit cuff. Seamless construction is soft and comfortable, launders well with minimal shrinkage. 12 per pack.

**Item #WK18A** **\$1.95/PR**



**WESTCHESTER**  
PROTECTIVE GEAR

## 100% Cotton Fleece Lined Jersey Gloves

Full fashion brown jersey work glove with red fabric flannel insulation. Slip-on style.

**Item #755** **\$1.75/PR**



## Hand Warmers

The Grabber 7+ Hour Hand Warmers are a standard cold weather solution for anyone working or playing out in the cold. Simply open the package and place in an enclosed glove, muff or pocket. The warmer will begin activating as soon as it is exposed to the air. The Grabber Mega Warmer is great for pockets, in a Grabber Sleeping Bag Pouch, or as refills for any Grabber Cozy Muff. The Mega Warmer is the perfect cold weather solution, providing hours of long lasting heat. Both designed for one-time, disposable usage.



**Item #173967** 7 hours **\$1.15/PR**  
**Item #MWES** 12 hours **\$1.30/EA**

## Hot Rods® Hand Warmers

Instantly warms in minutes after opening and will stay warm for up to 8 hours. Designed to fit comfortably in gloves and mittens offering superior protection for long hours in cold temperatures. Safe, disposable, odorless and non-toxic.



**CccuNomix**

**Item #110010R** **\$1.05/PR**

## Thermal Glove Liner

Helly Hansen Kastrup glove liner. Made of 100% polypropylene filament yarns and does not absorb perspiration. Extremely quick drying. Lightweight and non-allergenic. Ideal for temperatures ranging from 14-50°F. Great for cold weather and general purpose applications. One size fits most. Black.



**Item #79691** **\$18.00/EA**

## Berne® Deluxe Style Insulated Coverall

These deluxe style insulated coveralls are great for wearing in colder environments. Made with a heavy-duty 100% cotton duck quilt lining. The medium-weight insulation/liner is quilted with 100% polyester taffeta fabric. These coveralls feature an edge-stitched corduroy collar with snaps for optional hood. Hemmed sleeves with hidden knit storm cuffs and pleated elbows. Snap closure at neck opening along with a pleated bi-swing action back for extra comfort. Four-needle stitching on waistband with elastic inserts. Two-way brass front zipper with reinforced knees. Adjustable leg snaps with brass leg zipper. Two reinforced hip pockets with brass zipper, three inside pockets with zip closure, side utility pockets and hammer loop. Triple-needle stitched main seams for added durability.



<b>Item #I417BLK(size)</b>	Black	SM-2XL	<b>\$68.00</b>
<b>Item #I417BD(size)</b>	Brown	SM-2XL	<b>\$68.00</b>
<b>Item #I417NVR(size)</b>	Navy	SM-2XL	<b>\$68.00</b>

Available at additional cost: 3XL-6XL

## Berne® Nesthorn Insulated Bib Overalls

Featuring the exclusive Endurance Duck® material, these lightweight, warm, and rugged bib overalls are made from a 60/40 cotton/polyester ring-spun blend. The heavyweight insulation/liner below the waist is quilted to 100% polyester taffeta fabric. These bib overalls feature a water repellent finish with waterproof knees. Thigh-length brass leg zipper with antique nickel finish covered by storm flap with snap closure. Triple-needle stitched seams for added durability. Adjustable elasticized bib straps along with a zippered bib pocket with three tool pouches. Brass fly zipper with antique nickel finish. Reinforced hip pockets, side utility pockets, hammer loop and adjustable leg snaps.



<b>Item #B814BKR(size)</b>	Black	SM-2XL	<b>\$75.20</b>
<b>Item #B814HKYR(size)</b>	Hickory	SM-2XL	<b>\$75.20</b>
<b>Item #B814SAGR(size)</b>	Sage Green	SM-2XL	<b>\$75.20</b>

Available at additional cost: 3XL-4XL



## Class 2 Oversized T-shirt

Breathable, knit polyester short sleeve work shirt with 3" wide contrasting color bands. 3M™ Scotchlite™ 2" reflective trim provides excellent visibility while working on the jobsite. 100% wicking and completely stretchable. 360° reflectivity. Machine washable. Meets ANSI/ISEA Class 2 standards.

**Designed to Fit Over Coats & Jackets**

<b>Item #TA2GL(size)</b>	<b>\$9.95</b>
Yellow, MD-6XL	
<b>Item #TA2GO(size)</b>	<b>\$9.95</b>
Orange, MD-6XL	

**While Supplies Last**

## PURELL® Hand Sanitizer & Wipes

#9651



#9652



#965912



#390136BWL



### Hand Sanitizer

<b>Item #9651</b>	4 oz. Bottle	<b>\$2.75/BT</b>
<b>Item #9652</b>	8 oz. Bottle	<b>\$5.25/BT</b>
<b>Item #965912</b>	12 oz. Bottle	<b>\$6.95/BT</b>
<b>Item #390136BWL</b>	Bowl (36 1oz. btls)	<b>\$52.75/EA</b>

### Sanitizing Wipes

<b>Item #902512</b>	Individ. Wrapped, 40/bx	<b>\$5.90/BX</b>
<b>Item #911112</b>	100 Count Bucket	<b>\$9.95/BKT</b>
<b>Item #911306</b>	270 Count Bucket	<b>\$12.90/BKT</b>
<b>Item #9117GJ</b>	1200 Count Bucket	<b>\$72.50/BKT</b>

#911112



#902512



## SaniZide Plus® Germicidal Disinfectant

SaniZide Plus is a convenient, fast-acting, multi-purpose, broad spectrum disinfectant/deodorizer for environmental surfaces. Our alcohol-free formulation is a non-corrosive, EPA registered, quaternary ammonium compound effective against: TB, HIV, Hepatitis A, B, & C, MRSA, VISA, VRE, and now CA-MRSA!

For more info please visit [www.DiValSafety.com](http://www.DiValSafety.com)

<b>Item #34805</b>	16 oz. Spray Bottle	<b>\$4.30/BT</b>
<b>Item #34810</b>	32 oz. Spray Bottle	<b>\$7.45/BT</b>
<b>Item #34823</b>	160/ct Wipe Canister	<b>\$7.50/TB</b>



#34823

#34810



## Lakeland Insulated FR Coveralls, Parka & Bib Overalls

Lakeland flame resistant insulated 9 oz. navy cotton protective clothing is ideal for industrial applications in which the dangers of flash fires and/or explosions are an everyday worry. With the built in toughness of FR material, these cotton coveralls are economical FR protection that's made to last. Sports extra reflective tape for 360 degree visibility.



### Flame Resistant Insulated Cotton Coveralls

Features include reinforced seams, full length front zipper closure, two-way quick release zipper, two breast pockets, two "swing" hip pockets, two seat pockets, one utility pocket on right leg, and leg zippers for easy donning and doffing.

**Item #IC08RT13(size)** MD-2XL **\$330.00**

Available at additional cost: 3XL-4XL

### Flame Resistant Insulated Cotton Parka

Features include reinforced seams, fully insulated stand up collar, full length front zipper closure, two-way quick release zipper, two oversized chest pockets, two lower pockets, one inside chest pocket and adjustable wrist cuffs.

**Item #IP08RT13(size)** MD-2XL **\$315.00**

Available at additional cost: 3XL-4XL

### Flame Resistant Insulated Cotton Bib Overalls

Features include durable bib straps with non-metallic quick release clips, two angled overall chest pockets with hook and loop closures and leg zippers for easy donning and doffing.

**Item #IB08RT13(size)** MD-2XL **\$243.75**

Available at additional cost: 3XL-4XL

## Lightweight Insulated Twill Coverall

Made of 7.25 ounce Twill fabric and 65/35 polyester/cotton blend. These insulated coveralls are ideal to wear when working in colder environments. Features a one-piece top stitched collar with a two-way brass front zipper closure. Adjustable leg bottoms and side vent openings. Two set-in front pockets, two zippered breast pockets, two patch hip pockets, one-piece ruler/plier pocket and utility pocket on sleeve. 100% polyester insulation.

**Item #CT30NV** SM-XL **\$52.50**

Available at additional cost: 2XL-4XL



## Helly Hansen FR/ARC Class 3 Winter Apparel



Made with an FR Cotton/Nylon outershell 330 G/M<sup>2</sup> and quilted FR lining that features Arcxel™. Features a FireLite™ by Eurotex™ 2" Yellow/Silver/Yellow reflective striping around legs, on chest and "X" on back. Front storm flap over Nomex®/brass zipper with concealed snap closure. Double top-stitching provides durability and strength. Large front cargo pockets. Inside storage pocket. Full leg 2-way Nomex®/brass zipper with storm flap with Velcro® closure. Elastic back waist. Wind-proof and water resistant. Meets ASTM F3202, ASTM F1506, ATPV-73 cal/cm<sup>2</sup> and NFPA 70-E standards for HRC level 4 protection. Machine washable.



### FR Insulated Jacket w/ Reflective Striping

Helly Hansen FR Class 3 winter jacket.

**Item #76349NVY(size)** SM-2XL **\$485.00**

Available at additional cost: 3XL-4XL

### FR Insulated Bib Overall w/ Reflective Striping

Helly Hansen FR Class 3 winter bib with striping. Concealed snaps for attachment to 76349.

**Item #76549NVY(size)** SM-2XL **\$485.00**

Available at additional cost: 3XL-4XL

## Helly Hansen FR Waterproof Reflective Apparel



Constructed of an FR polyurethane (PU) coated aramid knit, this waterproof apparel protect against rain and wind, keeping the body dry and warm. Features include 360 degree 3M™ Scotchlite™ reflective tape. Microweld™ heat-sealed seams provide excellent FR protection. Meets ASTM F2733, F1891 and NFPA standards for HRC Level 2 protection. ATPV arc rating equals 8.6 cal/cm<sup>2</sup>.



### Class 2 FR Waterproof Reflective Jacket

Features include 360 degree 3M™ Scotchlite™ reflective tape across midsection, shoulders and forearms for enhanced visibility. Velcro® detachable three panel helmet hood with elastic gathered hood. Inside double stormflap with concealed nickel plated brass snaps and Velcro® front closure.

**Item #70219ORG** SM-2XL **\$315.00**

Available at additional cost: 3XL-4XL

### Class E FR Waterproof Reflective Bib Pant

Features include 360 degree 3M™ Scotchlite™ reflective tape across base of pants for enhanced visibility. Adjustable suspenders with quick release buckles. Side gusset for easy entry. Can be worn back to front for longer wear. Microweld™ heat-seal seams provide excellent FR protection. Meets ANSI Class E standards.

**Item #70519ORG** SM-2XL **\$290.00**

Available at additional cost: 3XL-4XL



## Ergodyne FR Hoodie

These flame-resistant pullover hoodie fleece sweatshirts are heavy-duty and arc rated for maximum comfort and protection. Features a moisture wicking material for multi-climate comfort. Anti-stink treatment helps workers remain unscented. The stretch fabric design along with knit cuffs, flat seams and double lined attached hood with adjustable lace closure provides a relaxed fit. Hidden zip-up arm pocket allows for key and cell phone storage. Visible FR tags including HRC Level to ensure workers are wearing compliant gear. Meets ASTM F1506 standards. Meets NFPA 70E standards for HRC Level 2 protection. Arc rating ATPV equals 18.0 cal/cm<sup>2</sup>.

### Pull-Over Hoodie

<b>Item #7440GRY(size)</b>	Gray	SM-3XL	<b>\$166.50</b>
<b>Item #7440NVY(size)</b>	Navy	SM-3XL	<b>\$166.50</b>

### Zip-Up Hoodie with Chest Pocket

<b>Item #7445GRY(size)</b>	Gray	SM-3XL	<b>\$181.50</b>
<b>Item #7445NVY(size)</b>	Navy	SM-3XL	<b>\$181.50</b>



## Ergodyne FR Long Sleeve Shirt

These flame-resistant shirts are lightweight, and are rated for maximum comfort and protection. Features a moisture wicking material for multi-climate comfort. Anti-stink treatment helps workers remain unscented. The stretch fabric design along with flat seams and long tail cut provide a relaxed fit. Front chest pocket for added storage. Visible FR tags including HRC level to ensure workers are wearing compliant gear. Meets ASTM F1506 standards. Meets NFPA 70E standards for HRC Level 2 protection. Arc rating ATPV equals 8.2 cal/cm<sup>2</sup>.

### Ultra Soft Crew Neck

<b>Item #7425GRY(size)</b>	Gray	SM-3XL	<b>\$91.50</b>
<b>Item #7425NVY(size)</b>	Navy	SM-3XL	<b>\$91.50</b>

### 3 Button Down Henley

<b>Item #7430GRY(size)</b>	Gray	SM-3XL	<b>\$96.00</b>
<b>Item #7430NVY(size)</b>	Navy	SM-3XL	<b>\$96.00</b>



## Ergodyne FR Base Layer

These flame-resistant base layer shirts are lightweight and are rated for maximum comfort and protection. Features a moisture wicking material for multi-climate comfort. Anti-stink treatment helps workers remain unscented. The 4-way stretch fabric design along with flat seams provide a relaxed fit. Meets ASTM F1506 standards. Meets NFPA 70E standards for HRC Level 1 protection. Arc rating ATPV equals 7.4 cal/cm<sup>2</sup>. Shirt side vents ATPV equal 6.0 cal/cm<sup>2</sup>.

### Long Sleeve Shirt

<b>Item #7415GRY(size)</b>	Gray	SM-3XL	<b>\$60.00</b>
----------------------------	------	--------	----------------

### Base Layer Shorts

<b>Item #7470GRY(size)</b>	Gray	SM-3XL	<b>\$36.00</b>
----------------------------	------	--------	----------------



## Ergodyne N-Ferno® FR Fleece Balaclava

Stretchable fleece keeps head and neck comfortable while providing FR protection. Features reflective accents for higher visibility keeping workers safe and seen. Meets ASTM F1506 and NFPA 70E standards. Provides HRC Level 2 protection. One size fits most.

<b>Item #6825</b>	<b>\$42.50</b>
Nomex®, Arc Rated, ATPV of 9.7 cal/cm <sup>2</sup>	

<b>Item #6828ERG</b>	<b>\$51.25</b>
Modacrylic Blend, Arc Rated, ATPV of 10.6 cal/cm <sup>2</sup>	

## Helly Hansen Fargo FR Base Layers



Helly Hansen Lifa® Baselayer ventilates excess heat and transports perspiration and moisture away from the skin into the next layer of clothing while keeping your body dry and warm. Anti-static fabric constructed of 48.5% Kermel®, 48.5% FR Lenzing® and 3% Belltron® interlock knit 230 G/ M<sup>2</sup> material.

Highly abrasion resistant. ATPV= 12.2 cal/cm<sup>2</sup>, HRC Level 2 protection. Meets ASTM F2302, ASTM F1506 and NFPA 70E standards. Offers excellent protection against heat, flames, and electrical arc flash.



Hazard Risk Category



### Base Layer Crewneck Shirt, Long-Sleeve

Features flatlock seams and double knit cuffs.

**Item #75090BLK(size)** SM-2XL **\$119.00**

**Item #75090DNM(size)** SM-2XL **\$119.00**

Available at additional cost: 3XL-4XL

### Base Layer Pant

Features flatlock seams, fly front, and double knit cuffs.

**Item #75490BLK(size)** SM-2XL **\$114.00**

**Item #75490DNM(size)** SM-2XL **\$114.00**

## Helly Hansen Duluth FR Thermal Apparel



Helly Hansen fleece thermal layer traps air and insulates against cold while ventilating excess heat and allowing moisture to pass through the fabric. The body stays dry and warm.

Anti-static fabric constructed of 50% Kermel®, 25% wool, 22% FR Lenzing® and 3% Belltron®, fleece knit 410 G/ M<sup>2</sup> material. Meets ASTM F2302, ASTM F1506 and NFPA 70E standards. Arc rating ATPV=18.1 HRC Level 2 protection.



Hazard Risk Category



### Duluth FR Thermal Sweatshirt Jacket

Features high collar design with drawcord adjustable hood, Front NOMEX®/brass zipper closure with inner storm flap. Reinforced zipper and collar edge with FR binding. Two side seam pockets with FR Knit cuffs at wrist. Flatlock seams, self extinguishing with permanent FR properties.

**Item #72190GRY(size)** SM-2XL **\$240.00**

**Item #72190ORG(size)** SM-2XL **\$240.00**

Available at additional cost: 3XL-4XL sizes

### Duluth FR Thermal Pant

Features flatlock seams with an enclosed elastic hem waist and FR knit cuffs at ankles. Self-extinguishing with permanent FR properties.

**Item #72490GRY(size)** SM-2XL **\$196.00**

**Item #72490ORG(size)** SM-2XL **\$196.00**

Available at additional cost: 3XL-4XL sizes

## Helly Hansen Fargo FR Balaclava

Anti-Static fabric made of 48.5% Kermel®, FR Lenzing and 3% Belltron® material. Insulates effectively against cold as well as extreme heat generated by an electrical arc by trapping air in a robust textile construction. Self extinguishing with permanent FR properties. Highly abrasion resistant. Flatlock seams with ribbed expandable face opening. Meets ASTM F1506, ASTM F2302 and NFPA 70E standards. Arc rating ATPV= 12.2 cal/cm<sup>2</sup>, HRC Level 2 protection.



Hazard Risk Category



**Item #79892DNM** Denim **\$42.75**

**Item #79892BLK** Black **\$42.75**

Hazard Risk Category



## Helly Hansen FR Hard Hat Pullover

Has a FireLite™ by Eurotex™ 2" yellow/silver/yellow stripe for daytime and nighttime visibility on back. It also has an adjustable front closure. Meets ASTM F2302, ASTM F1506, ATPV 73 cal/cm<sup>2</sup>, and NFPA 70E.HRC Level 4 protection.

**Item #79936NVY**

**\$72.25**



## Helly Hansen Duluth FR Thermal Layer Hood

Anti-static fabric made of 50% Kermel®, 25% Wool, 22% FR Lenzing®, and 3% Belltron® material. Insulates effectively against cold and also insulates against extreme heat generated by an electrical arc by trapping air in a robust textile construction. Self extinguishing with permanent FR properties. Comfortable FR rib knit around face opening and contouring neck to fit under a jacket. Meets ASTM F1506, ASTM F2302 and NFPA 70E standards. Arc rating ATPV=18.1 cal/cm<sup>2</sup>, HRC Level 2 protection. One size fits most.



Hazard Risk Category



**Item #79894GRY** **\$66.00**

## Premium FR Shoulder Length Helmet Liner

Features a cotton FR treated outer shell with a soft plush velour Nomex®/Kevlar® blend. Stitched with heavy duty Nomex® thread. Superior wind resistance. Insulated ear barrier. Hook and loop front closure for secure, comfortable fit. Arc Rating: ATPV = 31 cal/cm². Meets ASTM F1506 Standards. NFPA 70E/ HRC = 3. Flame resistant for up to 50 washings.



Item# **SS550FR** **\$39.10**

## Premium FR 3-in-1 Fleece Balaclava Face Mask

Warm, lightweight fleece with super soft velour inner and jersey outer lining. 5.8 ounce Nomex®/Kevlar® blend. Stitched with heavy duty Kevlar® thread. Drawstring front closure for secure, comfortable fit. Arc rating: ATPV 9.7 cal/cm². Meets ASTM F1506 Standards. NFPA 70E/ HRC = 2. Flame resistant (FR) for the life of the garment.



Item #**1070FR** **\$38.30**

## Premium FR Nomex® Full Face Helmet Liner

Comfortable fit with maximum stretch. Designed to fit snugly over more regular brim hard hats. Knitted with 8.75 ounce Nomex® rib knit. Meets ASTM F1506 Standards. NFPA 70E/ HRC = 1. Arc Rating: ATPV = 7.8 cal/cm². FR for life of garment. Black. 12 liners per pack, sold by the each.



Item #**LK910NFR** **\$22.10**

**JACKSON**

## AA-7 WINDGARD\* Head Protection

WINDGARD\* AA-7, keeps wind out, traps warmth and prevents moisture build-up. Knitted flame resistant treated spun polyester. Orange hi-visibility. Designed to fit over most hard hats.

Item #**KB1** **\$5.10**



**JACKSON**



While Supplies Last

## AA-9 WINDGARD\* Head Protection

WINDGARD\* AA-9, keeps wind out, traps warmth and prevents moisture build-up. Knitted flame resistant treated spun polyester meets 16 CFR 1610, Class 1. Full-face and neck cap and hat style. Designed to fit over most hard hats and covers mouth, face and neck.

Item #**22223** Blue **\$9.25**

Item #**22225** Red **\$9.25**



## High-Visibility Fleece Caps

Jackson Safety™ reflective fleece knit cap. This cap features a 1/2 inch wide super bright silver retro reflective tape and the fleece fabric offers a soft touch with additional warmth. One size fits most. Machine washable. Does not meet ANSI/ISEA Z107-2004 Standards.

Item #**3014360** Hi-Viz Orange **\$8.99**

Item #**3014361** Hi-Viz Yellow **\$8.99**

## N-Ferno® FR Winter Helmet Liner

2-Layer Modacrylic cotton blend twill shell with Modacrylic cotton blend fleece lining. 3M™ FR Thinsulate™ mid-layer and modacrylic cotton blend fleece lining to provide extreme warmth and protection. Elastic gather at forehead. Hook and loop straps for easy attachment. Warming pack pockets. Meets ASTM F1506 and NFPA 70E standards. One size fits most.



Item #	Layers	Arc Rating ATPV	HRC Protection	
<b>6880E</b>	2	20 cal/cm²	Level 2	<b>\$21.00</b>
<b>6882E</b>	2	20 cal/cm²	Level 2	<b>\$33.00</b>
<b>6890E</b>	3	27 cal/cm²	Level 3	<b>\$24.00</b>
<b>6892E</b>	3	27 cal/cm²	Level 3	<b>\$37.50</b>

## N-Ferno® FR 2-Layer Winter Liner

Versatile design with detachable upper and lower sections to provide the ultimate in winter and FR protection. Upper section features a Modacrylic cotton blend twill with Modacrylic cotton fleece lining, ATPV= 20 cal/cm². Lower section features a double layer Modacrylic blend rib knit, ATPV= 17 cal/cm². Nomex® metal zipper with hook and loops closure. Straps for easy attachment. Warming pack pockets. Meets ASTM F1506 and NFPA 70E standards. HRC Level 2 protection.



Item #**6885E** **\$40.50**



## Electra™ Premium Rainwear

Tingley Electra™ Premium Rainwear is a combination of flame resistant PVC coating on non-woven Nomex®, providing excellent thermal performance and maintains 100% waterproof protection. Waterproof, breathable, mildew resistant fluorescent fabric for all season comfort and excellent daytime visibility. 2 inch silver reflective tape reflects light for 360 degree nighttime conspicuity. Conforms to ASTM F1891. Arc rating: 7 cal/cm² for yellow/green and 11 cal/cm² for orange/red.

## Electra™ Flame Resistant Jackets

Jackets are ANSI/ISEA 107 Class 3 compliant. Therm-O-Rad sealed seams and zipper, storm fly front provides protection from wind, rain and contaminants. A full-vented cape back allows for improved air circulation. Features a D-ring access for fall protection harnesses, non-conductive hardware, easy access cargo pockets with closure. Jackets feature hook and loop take-up straps on sleeves and oversized 3 piece hood. Available in fluorescent yellow/green and fluorescent orange/red.

## Electra™ Flame Resistant Overalls

Overalls are ANSI/ISEA 107 Class E compliant. Therm-O-Rad sealed seams provide protection from wind, rain and contaminants. Overalls feature self material suspenders and crossover, heavy duty quick release suspender buckles and snap fly front, hook and loop take up straps. Available in fluorescent yellow/green and fluorescent orange/red.

Item #	Description	Color	Sizes	
<b>J42122(size)</b>	Jacket	Ylw/Grn	SM-XL	<b>\$101.50</b>
<b>J42129(size)</b>	Jacket	Org/Red	SM-XL	<b>\$101.50</b>
<b>O42122(size)</b>	Overalls	Ylw/Grn	SM-XL	<b>\$71.00</b>
<b>O42129(size)</b>	Overalls	Org/Red	SM-XL	<b>\$71.00</b>

Available at additional cost: 2XL-4XL

## Electra™ Nomex® Rain Coats

Constructed with the combination of flame resistant PVC coating on non-woven Nomex® providing excellent thermal performance and maintains 100% waterproof protection. Features include a zipper, storm fly front, oversized three piece hood with adjustable hook and loop take up strap. D-ring access for fall protection harness. Two inch reflective trim reflects light for 360° nighttime visibility. 48" in length. Conforms to ASTM F1891 for Arc Thermal Performance. ANSI/ISEA 107 Class 3 compliant. Arc rating: 7 cal/cm² for yellow/green and 11 cal/cm² for orange/red. Lightweight, soft waterproof rain coat.



Item #	Color	Sizes	
<b>C42122(size)</b>	Yellow/Green	MD-XL	<b>\$120.70</b>
<b>C42129(size)</b>	Orange/Red	SM-XL	<b>\$120.70</b>

Available at additional cost: 2XL-4XL

## Flame-Resistant Grid Beanie

Made from 11.9-ounce, FR Polartec® Power Stretch® fabric: 67% modacrylic/29% rayon/4% spandex. Its grid construction maximizes warmth, minimizes weight, and enhances breathability. It wicks moisture for comfort. Meets the performance requirements of NFPA 70E. Arc rating ATPV= 5.2 cal/cm², HRC Level 1 protection.



<b>Item #100492001</b>	Black	<b>\$25.00</b>
<b>Item #100492410</b>	Dark Navy	<b>\$25.00</b>
<b>Item #100492075</b>	Steel	<b>\$25.00</b>
<b>Item #100492211</b>	Brown	<b>\$25.00</b>

## Flame Resistant Hood

Two ply stretch hood, offers excellent head, neck protection and can easily be worn under your face mask or hard hat for added warmth. Eight inch bib length. Complies with ASTM, NFPA 70E, and OSHA Standards for HRC Level 2 protection. Launderable. One size fits all. Material: #H11RY and #H11RV are UltraSoft® single layer, #H61NK is 100% Nomex® double layer.



Item #	Arc Rating	Layer(s)	Color	
<b>H11RY</b>	12 cal/cm²	Single	Navy	<b>\$23.45</b>
<b>H11RV</b>	20 cal/cm²	Single	Navy	<b>\$29.10</b>
<b>H61NK</b>	10 cal/cm²	Double	White	<b>\$44.50</b>

## Flame-Resistant Fleece Hat

Gear up for a cold day in the reliable comfort of our durable flame-resistant fleece hat. It's constructed of 7.5-ounce, Nomex® III A fleece that's both warm and breathable. Meets NFPA 70E standards. Arc Rating ATPV= 15.2 cal/cm², HRC Level 2 protection.

**Item #100166410 \$29.00**



## Flame Resistant Knit Balaclava

FR 5.5-ounce, 2-ply knit: 48% modacrylic, 48% Tencel®/4% spandex. Moisture-wicking, fast-drying Work-Dry® technology with odor control. Full facial protection extends below the neckline. Face mask pulls down below the chin when not needed. Flat-seam, 2-ply construction enhances comfort and warmth. Carhartt FR label sewn on back. Meets NFPA 70E standards. Flame-resistant fabric by Innovative Textiles, Inc. Arc Rating ATPV= 15.0 cal/cm², HRC Level 2 protection.

**Item #FRA289 \$41.50**



## Tank Top Propane Heater

Mr. Heater tank top propane heater is for outdoor use only. Ready to use and mounts directly to one twenty pound propane cylinder (sold separately). Safe, heater shut-off automatically with loss of flame. Adjustable high, medium and low heater control.



### Single Burner Heater

Item #MH15T **\$51.85**

### Double Burner Heater

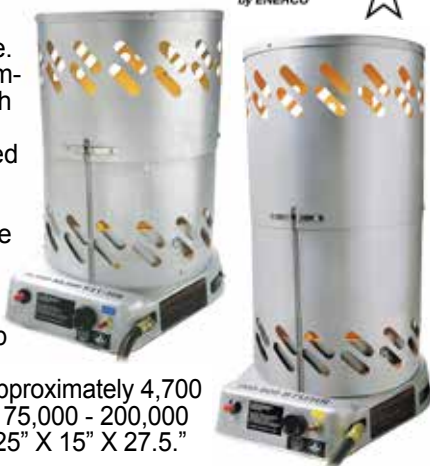
Item #MH30T **\$92.45**

### Triple Burner Heater

Item #MH45T **\$124.00**

## Convection Propane Heater

Heatstar Convection propane heater for the jobsite. Features "Insta-lock" chamber for easy assembly with Piezo push button igniter. Standing pilot for increased safety and telescoping chamber for reduced ship cube/retail space. 20' hose and regulator included.



HS200CV is used on larger job sites and runs up to 29 hours on 100 pound tank (low setting). Heats approximately 4,700 square feet, CSA certified. 75,000 - 200,000 BTU/HR. Dimensions: 18.25" X 15" X 27.5."

HS80CV is used on smaller job sites and runs up to 14 hours on 20 pound tank (low setting). Heats approximately 1,900 square feet, CSA certified. 30,000 - 80,000 BTU/HR. Dimensions: 15.25" X 18.25" X 21.75."

Item #HS80CV For Smaller Jobsites **\$108.35**

Item #HS200CV For Larger Jobsites **\$124.00**

## Cordless Forced Air Propane Heater, 35,000 BTU/HR

Heatstar cordless forced air propane heater is fully assembled, ready to use, no electricity required - heats during power outages. Operates up to 8 hours on a single charge. Operates on standard 20 pound cylinder. Clean burning, quiet, odorless. For more info please visit [www.DivalSafety.com](http://www.DivalSafety.com)



Item #HS35CLP **\$196.90**

## Propane Hose

Use Heatstar propane hose to connect all portable heater appliances to standard 20 lb tank. Regulator not included.



Item #F273701 5' Hose **\$28.00**

Item #F273702 12' Hose **\$77.90**



#MH9B



#MH18B



## Portable Buddy Heater, 200 Sq feet

Mr. Heater Portable Buddy heater features a new fold-down handle for compact storage and swivel out regulator for easy fuel connection. Designed and approved for emergency indoor and outdoor use. Automatic low oxygen shut-off system, accidental tip-over safety shut-off. Lightweight, easy to carry heats up to 200 square feet. Connects directly to a 20 pound cylinder with optional hose. CSA certified.

Item #MH9B **\$103.15**

## Portable Buddy Heater, 400 Sq Feet

Designed and approved for emergency indoor and outdoor use. Automatic low oxygen shut-off system, accidental tip-over safety shut-off. Heats up to 400 square feet. Connects directly to two 1 pound disposable cylinders or to a 20 pound cylinder with optional hose.

Item #MH18B **\$140.65**

## Fan Forced Portable Electric & Radiant Heater

The 198TMC radiant and fan forced shop heater circuits infrared radiation that directly heats objects or people within their line of sight. Features a fan as well as radiant technology to circulate heat evenly throughout an area. 3 heat settings include a 600 watt radiant setting, 900 watt fan forced setting and a 1500 watt radiant and fan-forced setting. Temperature control thermostat allows you to adjust the heat output and ensure maximum comfort. Tip-over-switch allows the heater to automatically shut-off if tipped over to prevent injuries and damage to your home. Small and portable design allows it to be used almost anywhere. 5,120 BTU heating capacity. 12-1/2 amperage. 120 voltage. 12" L x 11" W x 15" H. 6' cord length. UL approved.



**DiVAL**  
Safety & Supplies for Life

Item #198TMC **\$96.35**

## Deluxe Milk-House Portable Electric Utility Heater

The deluxe Milk-House utility heater features a 1300/1500 watt dual heat fan only setting with easy adjustment control knobs. Quick set thermostat controls allow you to adjust the heat output and ensure maximum comfort. Tip-Over-Switch allows the heater to automatically shut off if tipped over in order to prevent injuries and damage to your home. Small and portable design allows it to be used almost anywhere. Convenient, built-in handle for easy carrying. 5,200 BTU heating capacity. 12.5/10.8 amps, 120 volts. 16" length x 22" width x 27" height. 6' cord length. ETL/CETL approved.



**DiVAL**  
Safety & Supplies for Life

Item #EUH321 **\$32.50**



#HS75KT



#HS125KT



#HS175KT

## Forced Air Kerosene Heaters

Heatstar Forced Air Kerosene heater features heavy construction with illuminated On-Off switch. Enclosed motor, cord wrap, fuel gauge, high output fan and large "glove-friendly" controls. Overheat safety shut-off, continuous ignition. #HS125KT and #HS175KT also have large heavy-duty handles and 10" pneumatic tires. CSA certified.

Item #	BTU/HR	Fuel Tank	Runs	Heats	Size	
<b>HS75KT</b>	75,000	6 gallon	11 hours	1,750 sq.ft.	32" x 14-1/4" x 17"	<b>\$238.55</b>
<b>HS125KT</b>	125,000	14 gallon	15 hours	3,000 sq.ft.	42" x 18" x 22"	<b>\$332.30</b>
<b>HS175KT</b>	175,000	14 gallon	10 hours	4,250 sq.ft.	42" x 18" x 22"	<b>\$353.15</b>



#K75W



#K125



#K175

## Forced Air Kerosene Heaters

Tradesman® forced air heaters are the leading portable kerosene gas heater for construction jobs and industrial work sites. They provide instant, efficient directional heat and are designed to withstand harsh working environments. Features a dependable dual-prong electronic spark ignition, heavy-duty enclosed motor and long lasting composite fuel fittings to lengthen life and trouble free operation in use. Direct-fired = 99.97% fuel efficiency. Threaded drain plug along with a built in air diagnostic system for troubleshooting ease. Temperature display and thermostat help control fuel usage. Pressure gauge included for easy serviceability. CSA

Item #	BTU/HR	Fuel Tank	Runs	Heats	Size	
<b>K75W</b>	75,000	5 gallon	8.5 hours	1,750 sq.ft.	32" x 12" x 17"	<b>\$215.00</b>
<b>K125</b>	125,000	10 gallon	10.5 hours	3,000 sq.ft.	37 1/2" x 22 1/2" x 25"	<b>\$299.00</b>
<b>K175</b>	175,000	13 gallon	10 hours	4,250 sq.ft.	43 1/2" x 24" x 26 1/2"	<b>\$325.00</b>

## Tradesman™ Portable Forced Air Propane Gas Heaters

Tradesman™ forced air heaters are the leading portable gas heater for construction jobs and industrial work sites. Engineered to deliver reliable, directional heat and designed to withstand harsh working environments. Features a unique 3-trial dependable electronic direct spark ignition system along with the industry's heaviest gauge combustion chamber and burner plate for long life. Variable heat output promotes fuel savings and controls maximum fuel efficiency. Direct-fired = 99.97% fuel efficiency. Superior Tri-Shield finish provides extended protection against abrasion and corrosion. CSA certified. Made in the U.S.A. 10' gas hose included.

#T170U has additional features: Adjustable front leg that provides easy direction of heat. Illuminated self diagnostic service saver light for convenient trouble-shooting. Thermostatic temperature controls allow you to adjust the heat output and ensure maximum comfort.

Item #	Fuel Consumption	BTU/HR	Heats	Size	
<b>T100LP</b>	4.6 lbs./hr	50,000 - 100,000	1,750 sq.ft.	25" x 10" x 14"	<b>\$215.00</b>
<b>T170U</b>	7.2 lbs./hr	125,000 - 170,000	3,000 sq.ft.	24" x 10" x 16"	<b>\$325.00</b>



#T100LP



#T170U

## Rock Salt Ice Melter, 50 lb Bag

American Rock Salt Halite melts ice and snow quickly and keeps melting it for an extended period of time. This is made possible through multi-sized crystals. The small crystals dissolve quickly while the larger crystals last longer. 50 lb bag. 49 per skid.



Item #49100

\$7.75/BG

## Aspen® Snow & Ice Melt, 50 lb. Bag

Aspen's® premium blend of Sodium and Magnesium Chloride delivers the power you need to battle the harshest storms. Easily melts ice down to sub-zero temperatures (-7°F), is environmentally safe and starts melting faster than all other common ice melters. Contains a patented corrosion inhibitor. 50 lb bag.



Item #57070

\$15.75/BG

## Pro Series® 550 Select Blend, 50lb. Bag

Select Blend ice melter 50 lb bag. Select Blend is sodium chloride based and contains potassium chloride which melts ice and is a natural fertilizer for grass, trees and other vegetation. It melts ice down to 0°F/-18°C, is safe on properly air entrained, cured concrete if used as directed. For more info please visit [www.DiValSafety.com](http://www.DiValSafety.com)



Item #57050

\$15.60/BG

## Rubbermaid® Scoop Shovel

Multi-purpose scoops designed for better weight distribution, improved handling. Made of durable, break-resistant clear polycarbonate. Smooth surfaces for easy cleaning. Dishwasher safe. BPA-Free.



Item #2885SS

\$9.25/EA

## Waterhog™ Classic Indoor/Outdoor Floor Mat



The Anderson Company Waterhog™ Classic indoor, outdoor floor mat. 24 ounce square yard solution dyed polypropylene fabric is highly stain resistant, SBR rubber backing contains 20% recycled rubber from car tires. Inch thick bi-level surface effectively removes and stores dirt and moisture beneath shoe level between cleanings.



For more info please visit [www.DiValSafety.com](http://www.DiValSafety.com)

## WHITE-OUT All Purpose Heavy-Duty Floor Cleaner

All purpose heavy duty cleaner formulated to condition floors and remove ice melt residue, hard-water build-up and soap scum from all surfaces. WHITE-OUT is designed to dissolve all ice melt chlorides and other hard water films. Great for superior cleaning results on heavily soiled floors. When used as directed, WHITE-OUT will not harm any surface not affected by water. Highly concentrated and economical. Great for use on concrete, linoleum, vinyl, brick, terrazzo, and ceramic floors. Sold by the gallon. 4 gallons per case.



Item #DV2014

\$14.00/GL

## HeatTrak Electric Entrance Mat



HeatTrak heated electric entrance mats. Outdoor heated matting is an efficient and convenient way to eliminate snow and ice accumulation around the home or facility. HeatTrak products are made of an electrically operated heating element sandwiched between two protective surfaces of non-slip rubber making them as durable as automobile tires and allowing them to endure harsh wear. Plugs directly into a standard 120V outlet using its own inline ground fault circuit interrupter.



Item #HTM245

24" x 5'

\$387.50

Item #HTM365

36" x 5'

\$588.55

Item #HTM3610

36" x 10'

\$1166.70

Item #HTM3615

36" x 15'

\$1750.00



## Anti-Fatigue Rubber Mat, Black, 3' x 3'

Anti-fatigue rubber mat, 3' x 3'. Cushion designed to greatly reduce leg and back fatigue. For more info please visit [www.DiValSafety.com](http://www.DiValSafety.com)

Item #155419 \$17.75



## Superior PVC Sponge Kneeling Pad, 8" x 16"

Superior PVC Sponge Kneeling Pad is made of sturdy industrial grade material, providing great durability and tensile strength. Features a reduced handle size allows for more surface area to kneel on. Die cut 8" x 16" x 11/16" thickness.

Item #ANSTK8X16 \$10.40

## True Temper® Snow Shovels & Pushers

**TRUE TEMPER**



### Klondike Poly Snow Pusher

47-3/4" Handle, 11" x 18" Blade

Item #1575200 **\$8.10**

### Klondike Poly Snow Shovel

50-1/2" D-Handle, 14" x 18" Blade

Item #1574600 **\$10.05**

### Garant Industrial Grade Polypro Snow Pusher

50-1/2" D-Handle, 14" x 18" Blade

Item #GIPP26KDU **\$20.99**

### Garant Industrial Grade Polypro Snow Shovel

50-1/2" D-Handle, 14" x 18" Blade

Item #GIPM18KDU **\$17.99**

### True Temper® Poly Snow Pusher

48 1/4" Handle, 11" X 24" Blade

Item #1635800 **\$23.95**

### True Temper® Poly Snow Shovel

42 1/4" Handle, 13 1/2" X 20" Blade

Item #1649800 **\$23.95**

For more info please visit [www.DiValSafety.com](http://www.DiValSafety.com)

## Lightweight Aluminum Scoop Shovel

29" Handle, #12 Style Scoop

Item #53132 **\$44.40**

## Steel Deep Scoop Shovel

39" Handle, 14-1/2" x 15-1/2" Blade

Item #79804 **\$37.50**

## Multi Purpose Steel Scoop Shovel

46" Handle, 11-1/2" x 14-1/2" Blade

Item #79805 **\$33.85**

## Multi Purpose Steel Scoop Shovel

34" Handle, 11-1/2" x 14-1/2" Blade

Item #79809 **\$25.85**

For more info please visit [www.DiValSafety.com](http://www.DiValSafety.com)

**UnionTools**

**RAZORBACK**  
PROFESSIONAL TOOLS



## Heavy Duty Sleigh Shovel

For heavy snowfalls, no tool is faster or easier to use than a True Temper snow sleigh. 24" blade. 59-1/2" long.

Item #1600900 **\$51.60**

## Auto Boss® Collapsible Snow Shovel

Light weight, portable, and it's compact design offers easy storage for the back seat, truck, or bag. 32" in overall length.

Item #1588400 **\$13.05**

## Lightweight Aluminum Snow Roof Rake

This 17' Snow Roof Rake removes snow build-up from roof and eaves to prevent damage. 6-1/2" x 24" poly blade.

Item #1634500 **\$46.35**

For more info please visit [www.DiValSafety.com](http://www.DiValSafety.com)



## **Razor-Back® Industrial Grade Forged Head Scraper**

54" Handle, Socket Pattern 7" x 6" Blade.

**Item #78202 \$26.85**

## **Multi Purpose Forged Head Ice Scraper**

48" Handle, 6" x 5" Blade

**Item #81102 \$21.65**

## **Heavy Duty Forged Head Ice Scraper**

54" Handle, 4" x 9" Blade

**Item #81104 \$22.40**

## **Heavy Duty Forged Ice Scraper**

54" Handle, 7" x 9" Blade

**Item #81109 \$29.70**

For more info please visit [www.DiValSafety.com](http://www.DiValSafety.com)



## **SURESPREAD™ Professional Salt & Ice Melt Push Spreader**

These professional grade salt and ice-melt push spreaders are great for ice and snow removal. Chapin® SURESPREAD™ technology ensures an even pattern distribution of product by combining it's innovative gate design, strategic placement of gate, and openings. It's adjustable 360 degree salt baffle system helps spread salt only where you want it. Patent pending poly conical auger helps agitate product and minimize clumping. 43% larger gate opening allows product to flow smoothly. Solid steel linkage opens and closes the gate in incremental steps. T-handle with comfort grips feature gate control at fingertips. Enclosed metal gears to withstand the harshest elements. Grate and rain cover included. Easy to assemble.

<b>Item #</b>	<b>T-Handle</b>	<b>Tires</b>	<b>Capacity</b>	
<b>82088N</b>	Powder Coated Steel	12" Pneumatic	80 lbs.	<b>\$192.95</b>
<b>82108N</b>	Stainless Steel	14" Pneumatic	100 lbs.	<b>\$310.00</b>



## **SURESPREAD™ Residential Salt & Ice-Melt Push Spreader**

These residential Sure-Spread™ salt and ice-melt push spreaders are great for snow and ice removal. Features an adjustable 360 degree salt baffle system that helps spread salt only where you want it. Patent pending poly conical auger helps agitate product and minimize clumping. 26% larger gate opening allows product to flow smoothly. Heavy-duty stainless steel frame fully supports hopper at its base. 12" fully pneumatic tires easily handle rough terrain. Grate and raincover included. 80 pound capacity. Easy to assemble.

**Item #80088 \$123.75**



## **True Temper® Scratch-Free Snow Brush w/ Comfort Grip Handle**

The True Temper Scratch-Free Snow Brush has an innovative head design that removes snow in smaller and hard to reach areas. This head is made of freeze-resistant material that can withstand the harshest winters. Features an innovative EVA foam brush that won't scratch your car or freeze. Removes snow in small areas. Elliptical aluminum handle with comfort grip.

**Item #ABTT28 28" \$12.99**  
**Item #ABTT36 36" \$16.99**

## **SHOWA® 4545 Insulated Foam Nitrile Coated Gloves**

SHOWA® 4545 glove combines a durable and extended 3/4 over the knuckle foam nitrile coating with an acrylic fleece liner to keep the hand comfortably warm. Comfort, lasting warmth and wet/dry gripping power are unmatched with this multi-feature glove. 15 gauge seamless nylon knit glove for high dexterity and Zorb-IT® lite oil absorbency palm coating for oily grip. The nitrile coating will not stiffen and retains maximum flexibility in temperatures down to -15°F. Warm 7 gauge brushed inner acrylic fleece liner for cold applications. This fully launderable glove also comes with a color coded cuff, making sorting easy after washing. Ideal for applications in deicing, outdoor work, airport maintenance, aircraft assembly, construction, transportation, cold storage, snow removal, highway work, forestry and agriculture. Certified to ANSI/ISEA 105-2005 standards.

**Item #4545(size) MD-2XL**



**\$7.25**